



Front End and Wafer Handling Products Catalog





Established in 1999 by a team of semiconductor industry veterans, ePAK is a full-service designer, manufacturer and supplier of precision engineered products and solutions for the automated transport and handling of semiconductor and electronic devices. Our product areas include front-end wafer handling, back-end IC transport, and end-system sub-assembly handling. Our products are sold globally to top tier global customers including semiconductor companies, system OEMs, and IC assembly and test operations. Our large-scale manufacturing and design center in Shenzhen, China is centrally located to the semiconductor industry's back-end activities and supports a global network of JIT distribution centers. ePAK's corporate headquarters is located in Austin, Texas and we maintain nine sales and applications engineering offices worldwide.

Device protection and contamination control begins at the wafer fab and extends to the assembly site. ePAK never forgets that the most valuable product in the semiconductor and electronics industry is also the most fragile and susceptible to mishandling and contamination. Not all wafers are created equal...with back-grinding, unique material sets, and exotic semiconductor processes, one product does not fit all wafers.

From ePAK's most advanced eLX wafer canisters to cost efficient wafer jars, ePAK tailor fits their products to meet your requirements.



- Expanding constantly to meet increasing demand
- Semiconductor & electronics packaging market focused
- Customer driven product development
- Over 130 injection molding lines
- Full range of materials available
- 12 cleaning lines for wafer products
- 4 class 100 clean rooms (over 4500 sq. meters)



Products

1" / 1.5" / 2" / 2.5" / 3" /

3.25" / 3.54"

* Single Wafer Shippers	28
* 25 Wafer Shipping Boxes	13, 14
* Process Boats	16, 20, 21
* Storage Boxes	16
* Envelopes	25
* OverPAKs™	29, 53,

4" (100mm)

* Single Wafer Shippers	28
* 25 Wafer Shipping Boxes	13, 14, 15
* Wafer Jars	6
* Process Boats	16, 20, 21
* Storage Boxes	16
* Envelopes	25
* OverPAKs	29, 53-54,

5" (125mm)

* Single Wafer Shippers	28
* 25 Wafer Shipping Boxes	15
* Wafer Canisters	5
* Wafer Jars	6
* Process Boats	17, 21
* Storage Boxes	17, 24
* Envelopes	25
* OverPAKs™	53-54,

Products

6" (150mm)

* Single Wafer Shippers	28, 30, 31
* 25 Wafer Shipping Boxes	13, 14-15
* Wafer Canisters	4-5
* Wafer Jars	6
* Process Boats	18, 20, 22
* Storage Boxes	18, 24
* OverPAKs™	29, 53-54
* Envelopes	25

8" (200mm)

* Single Wafer Shippers	30, 31, 32
* 25 Wafer Shipping Boxes	15
* Wafer Canisters	4-5
* Wafer Jars	6
* Process Boats	19, 20, 23
* Storage Boxes	19, 24
* OverPAKs™	53-54
* Envelopes	25

12" (300mm)

* Single Wafer Shippers	30, 32
* Wafer Canisters	4-5
* Wafer Jars	6
* OverPAKs™	51-52

18" (450mm)

* Single Wafer Shippers	30
-------------------------	--------------------

Pages

Products

Internal Canister/Jar Cushioning

* Separators/Interleaf	7
* Ring Separators	8
* Foam Disks	9
* Foam Liners for Wafer Jars	10
* ePAD™ Wafer Protection System	11-12

Film / Flex Frames

* Film / Flex Frames	34, 35
* Film Frame OverPAKs™	55
* Film Frame Single Shippers	36
* Film Frame Multi-Shippers	37
* Film Frame Canisters	38
* Film Frame Canister Accessories	39-40

Grip / Hoop Rings

* Grip / Hoop Rings	41
* Shippers	42

Chip Trays

* Chip Trays & Accessories	44-50
----------------------------	-----------------------

Bags

* Clean Room	56, 57,
* Moisture Barrier	58-59

Handles

* Handles for Process Boats	27
-----------------------------	--------------------

Glass Substrate Shippers [43](#)

Laser Marking [51](#)

Badge Holders & Clips [26](#)





eLX™ WAFER CANISTERS*

- Enhanced protection of wafer surfaces
- Minimizes lateral movement without applying compression to delicate wafer edges
- Advanced design minimizes particle generation
- Secure 4 latch system (with 2 latch option)
- Impact resistant design
- Large label areas
- Interfaces with industry robotic handling equipment
- Drop-in replacement for old industry designs
- Protective shipping OverPAKs available... [see products](#)



Wafer canister part numbers and ordering information:

Wafer Size	ePAK Description	ePAK Order Code	Internal Diameter	Internal Height	Corner Latches #	Outside Base Size	Std Pack Quantity
6"	eCT-LX6/150-2-44-R.1-x	eWB0086-2-x	151 mm	44 mm (1.73")	2	174.5mm x 174.5mm	10/carton
6"	eCT-LX6/150-4-44-R.1-x	eWB0086-4-x	151 mm	44 mm (1.73")	4	174.5mm x 174.5mm	10/carton
6"	eCT-LX6/150-2-44-x	eWB0019-2-x	151 mm	44 mm (1.73")	2	225mm x 225mm	10/carton
6"	eCT-LX6/150-4-44-x	eWB0019-4-x	151 mm	44 mm (1.73")	4	225mm x 225mm	10/carton
6"	eCT-LX-6/150-4-66-x	eWB0435-4-x	150.8 mm	66 mm (2.6")	4	174.5mm x 174.5mm	10/carton
8"	eCT-LX8/200-2-44-x	eWB0018-2-x	201 mm	44 mm (1.73")	2	225mm x 225mm	10/carton
8"	eCT-LX8/200-4-44-x	eWB0018-4-x	201 mm	44 mm (1.73")	4	225mm x 225mm	10/carton
8"	eCT-LX-8/200-4-69-x	eWB0383-4-x	200.8 mm	69 mm (2.72")	4	225mm x 225mm	10/carton
12"	eCT-LX12/300-4-44-x	eWB0026-4-x	301.5 mm	44 mm (1.73")	4	326mm x 326mm	12/carton
12"	eCT-LX12/300-4-71-x	eWB0371-4-x	301.2 mm	71 mm (2.79")	4	326mm x 326mm	8/carton

eFORM™ –Clean Adjustable Platform option to minimize vertical movement (–x in P/N):

Wafer Size	ePAK Description	ePAK Order Code	Diameter	Adjustable Height	Std Pack Quantity
6"	eAP6-150-16-x	eOP0042-x	150 mm	16 mm	10/pack
8"	eAP8-200-16-x	eOP0041-x	200 mm	16 mm	10/pack
12"	eAP12-300-16-x	eOP0045-x	300 mm	16 mm	10/pack



Material code options (–x in P/N):

Material	Code	SR
Conductive PP	eM-01-BLK	10e4-10e5

-A wide range of cushion disks and wafer separators are available-

(PATENTS: US #6988620, PRC #ZL 03 2 07820 X, Singapore #106157, Taiwan # I299315, Japan #4383808)

[RETURN TO TABLE OF CONTENTS](#)

STANDARD WAFER CANISTERS

- For high-security transit of wafers
- Designed for stacking
- Quick release snap-lock design for lid removal
- Recessed slots for easy loading and unloading
- Wafer loader machine compatible with most industry equipment
- Protective shipping OverPAKs available...[see products](#)



Wafer canister part numbers and ordering information:

Wafer Size	ePAK Description	ePAK Order Code	Internal Diameter	Internal Height	Corner Latches #	Std Pack Quantity
5" **	eLC-TI5/125-2-x	eWB0055-2-x	127 mm	28 mm (1.1")	2	20/carton
5" **	eLC-TI5/125-4-x	eWB0055-4-x	127 mm	28 mm (1.1")	4	20/carton
6" **	eLC-TI6/150-2-x	eWB0102-2-x	152 mm	28 mm (1.1")	2	20/carton
6"	eCT-152-26-x	eWB0007-x	152 mm	26 mm (1.1")	2	30/carton
8" **	eLC-TI8/200-2-x	eWB0075-2-x	202 mm	28 mm (1.1")	2	20/carton
8" **	eLC-TI8/200-4-x	eWB0075-4-x	202 mm	28 mm (1.1")	4	20/carton
8"	eCT-202-30-x	eWB0004-x	202 mm	30 mm (1.2")	2	20/carton
8"	eCT8/200-38-2-x	eWB0234-2-x	202 mm	38 mm (1.5")	2	20/carton
8"	eCT8/200-38-4-x	eWB0234-4-x	202 mm	38 mm (1.5")	4	20/carton
12"	eCT12-300-18-x	eWB0069-x	303 mm	18 mm (0.7")	4	10/carton
12" **	eCT-303-21-x	eWB0009-x	303 mm	21 mm (0.9")	4	10/carton

(** Patented "Double Ring" design)

Material code options (-x in P/N):

Material	Code	SR
Conductive PP	eM-01-BLK	10e4-10e5
Natural PP	eM-08-NAT	n/a

- A wide range of cushion disks and wafer separators are available

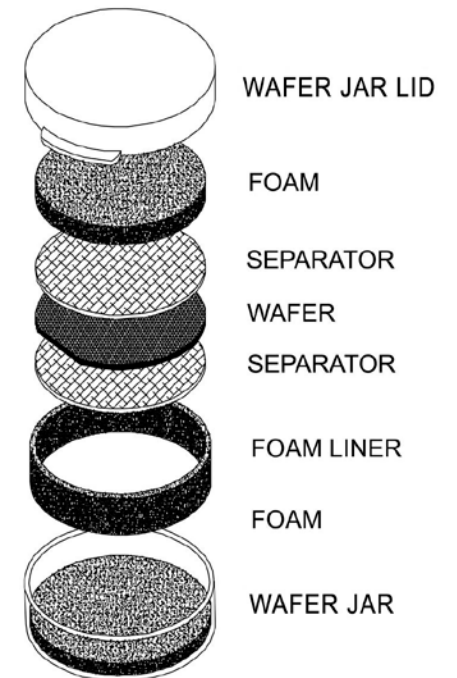
[RETURN TO TABLE OF CONTENTS](#)

- Easy loading/unloading in automated or manual applications
- Impact resistant containers feature a snap-on lid for secure packing
- Available in both conductive PP and natural (non-conductive) PP materials
- A wide range of cushion disks, jar liners and wafer separators are available
- Overpaks available...[see products](#)



Wafer Jar part numbers and ordering information:

Wafer Size	ePAK Description	ePAK Order Code	Internal Diameter	Internal Height	Std Pack Quantity
4"	eJR4-100-23-x	eWB0040-x	111 mm	23 mm (0.9")	200/carton
4"	eJR4-100-32-x	eWB0044-x	111 mm	32 mm (1.3")	200/carton
4"	eJR4-100-49-x	eWB0038-x	117 mm	49 mm (1.9")	100/carton
4"	eJR4-100-60.5-x	eWB0041-x	111 mm	60.5 mm (2.4")	100/carton
5"	eJR5-125-38-x	eWB0072-x	142 mm	38 mm (1.5")	100/carton
5"	eJR5-125-49-x	eWB0128-x	142 mm	49 mm (1.9")	100/carton
5"(Note #1)					
5"(Note #2)	-				
5" (Note #3)	-				
6"	eJR6-150-20-x	eWB0033-x	167 mm	20 mm (0.8")	100/carton
6"	eJR-170-38-x	eWB0001-x	167 mm	38 mm (1.5")	100/carton
6"	eJR6-150-49-x	eWB0150-x	167 mm	49 mm (1.9")	100/carton
6"	eJR-167-76-x	eWB0008-x	167 mm	76 mm (3")	60/carton
8"	eJR8-200-23-x	eWB0035-x	235 mm	23 mm (0.9")	40/carton
8"	eJR-235-51-x	eWB0010-x	235 mm	51 mm (2")	20/carton
12"(Note #4)	eJR12-300-23-x	eWB0054-x	303 mm	23 mm (0.9")	10/carton



Note #1: Additional 5"x 20mm option for wafers utilize the 6" (eJR-150-20-X) Jar, 6" (eFL6-518-19-6-eM-04-H-PNK) Liner, and the 5" (eFL5-474-19-13-eM-04-H-PNK) Liner

Note #2: Additional 5"x 38mm option for wafers utilize the 6" (eJR-170-38-X) Jar, 6" (eFL6-518-37-6-eM-04-H-PNK) Liner, and the 5" (eFL5-474-37-13-eM-04-H-PNK) Liner

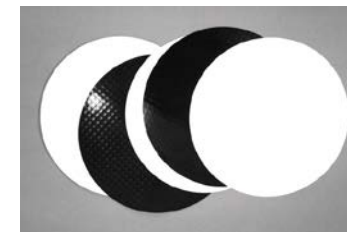
Note #3: Additional 5"x 76mm option for wafers utilize the 6" (eJR-167-76-X) Jar, 6" (eFL6-518-75-6-eM-04-H-PNK) Liner, and the 5" (eFL5-474-75-13-eM-04-H-PNK) Liner

Note #4: Patented "Double Ring" design does not require a foam liner.

Material code options (-x in P/N):

Material	Code	SR
Conductive PP	eM-01-BLK	10e4-10e5
Natural PP	eM-08-NAT	n/a

[RETURN TO TABLE OF CONTENTS](#)



Wafer Separators – (Interleaf) for use between individual wafers

Anti-static spun PO (Tyvek®)

Wafer Size	ePAK Description	ePAK Order Code	Interleaf Diameter	Separator Thickness	Std Pack Quantity
4"	eIL4-100-0.16-eM-03-A-WHT	eIL0010-eM-03-A-WHT	100 mm	0.16 mm (.006")	250/pack
5"	eIL5-125-0.16-eM-03-A-WHT	eIL0007-eM-03-A-WHT	125 mm	0.16 mm (.006")	250/pack
6"	eIL6-150-0.16-eM-03-A-WHT	eIL0005-eM-03-A-WHT	150 mm	0.16 mm (.006")	250/pack
8"	eIL8-200-0.16-eM-03-A-WHT	eIL0004-eM-03-A-WHT	200 mm	0.16 mm (.006")	250/pack
12"	eIL12-300-0.16-eM-03-A-WHT	eIL0006-eM-03-A-WHT	300 mm	0.16 mm (.006")	250/pack

Carbon Separator (Conductive PS)

Wafer Size	ePAK Description	ePAK Order Code	Interleaf Diameter	Separator Thickness	Std Pack Quantity
4"	eIL4-100-0.07-eM-20-BLK	eIL0023-eM-20-BLK	100 mm	0.07 mm (.003")	200/pack
4"	eIL4-100-0.13-eM-20-BLK	eIL0009-eM-20-BLK	100 mm	0.13 mm (.005")	200/pack
5"	eIL5-125-0.07-eM-20-BLK	eIL0024-eM-20-BLK	125 mm	0.07 mm (.003")	200/pack
5"	eIL5-125-0.13-eM-20-BLK	eIL0008-eM-20-BLK	125 mm	0.13 mm (.005")	200/pack
6"	eIL6-150-0.07-eM-20-BLK	eIL0016-eM-20-BLK	150 mm	0.07 mm (.003")	200/pack
6"	eIL6-150-0.13-eM-20-BLK	eIL0002-eM-20-BLK	150 mm	0.13 mm (.005")	200/pack
8"	eIL8-200-0.07-eM-20-BLK	eIL0022-eM-20-BLK	200 mm	0.07 mm (.003")	200/pack
8"	eIL8-200-0.13-eM-20-BLK	eIL0001-eM-20-BLK	200 mm	0.13 mm (.005")	200/pack
12"	eIL12-300-0.16-eM-20-BLK	eIL0003-eM-20-BLK	300 mm	0.16 mm (.006")	150/pack

Material code info:

Material	Code	SR
Anti-static spun PO (Tyvek®)	eM-03-A-WHT	10e6-10e11
Proprietary conductive PS	eM-20-BLK	10e4-10e11

[RETURN TO TABLE OF CONTENTS](#)



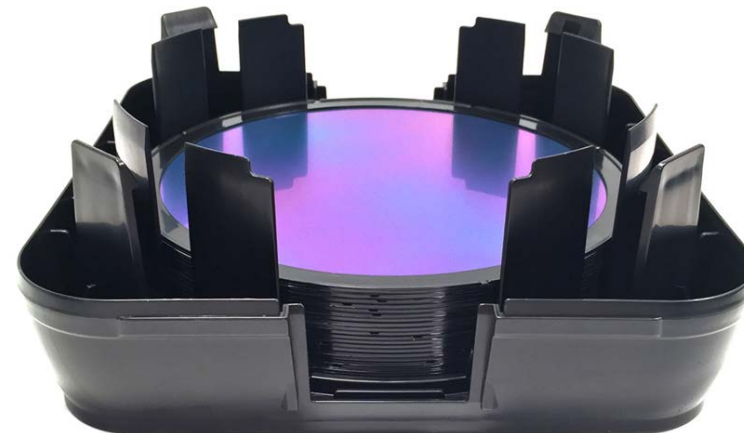
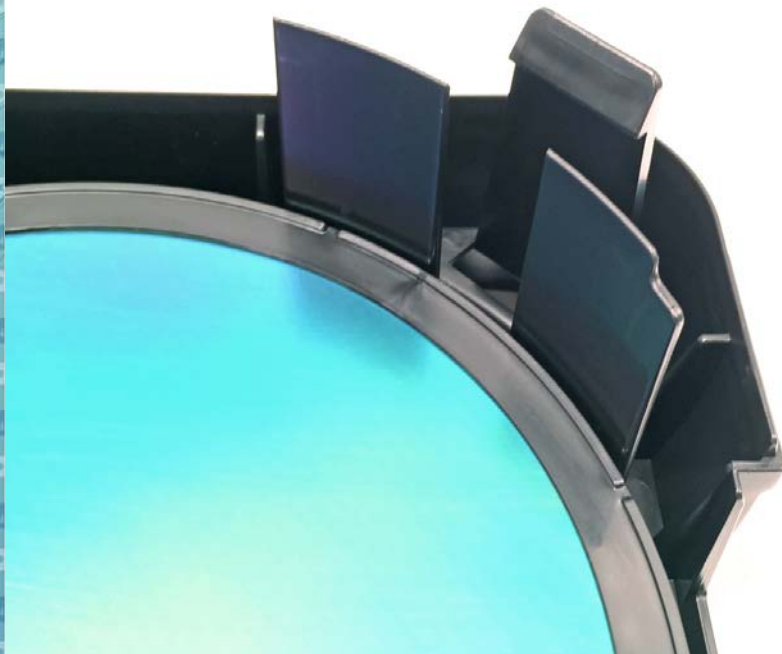
- Ring Separators are used when a surface contact is not preferred. Outer raised edge contacts only the wafer outer circumference on its active surface.
- Ring separators are only for use in “eLX” style canisters as they require lateral movement to be minimized.
- The eLX canisters, mWB0383 (200mm) and mWB0371 (300mm) are designed for 25 wafers when using Ring Separators.

Wafer Size	ePAK Description	ePAK Order Code	Separator Diameter	Separator Thickness	Std Pack Quantity
6" (150mm)	150MM COIN STACK RING SEPARATOR-eM-01-BLK	eRS0003-eM-01-BLK	150 mm	1.75 mm	1200/box
8" (200mm)	200MM COIN STACK RING SEPARATOR-eM-01-BLK	eRS0001-eM-01-BLK	200 mm	1.75 mm	600/box
12" (300mm)	300MM COIN STACK RING SEPARATOR-eM-01-BLK	eRS0002-eM-01-BLK	300 mm	1.75 mm	200/box
12" (300mm)	eFHRS-300-eM-01-BLK (*See Note #1 below)	eRS0015-eM-01-BLK	300 mm	3.75 mm	

*Note #1- Fixed Height Ring Separator design. Only designed for use with eWB0371-4-x wafer canister.

Material code:

Material	Code	SR
Conductive PP	eM-01-BLK	10e4-10e5



[RETURN TO TABLE OF CONTENTS](#)



FOAM PACKING MATERIALS

-FOAM CUSHION DISKS-

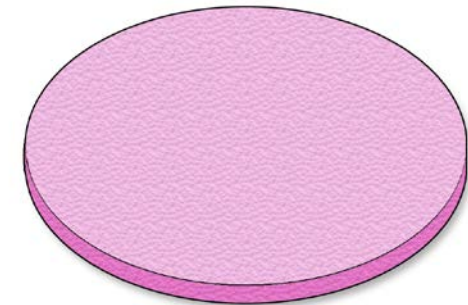
Top/Bottom Cushion Disks –ESD sensitive cushioning material for use with Canisters and Jars

Wafer Size	ePAK Description	ePAK Order Code	Foam Diameter	Foam Thickness	Std Pack Quantity
4"	eFD4-100-3-eM-04-H-PNK	eFD0010-eM-04-H-PNK	100mm	3 mm	100/pack
4"	eFD4-100-6-eM-04-H-PNK	eFD0011-eM-04-H-PNK	100mm	6 mm	50/pack
5"	eFD5-125-3-eM-04-H-PNK	eFD0008-eM-04-H-PNK	125mm	3 mm	100/pack
5"	eFD5-125-6-eM-04-H-PNK	eFD0004-eM-04-H-PNK	125mm	6 mm	50/pack
6"	eFD6-150-3-eM-04-H-PNK	eFD0007-eM-04-H-PNK	150mm	3 mm	100/pack
6"	eFD6-150-6-eM-04-H-PNK	eFD0002-eM-04-H-PNK	150 mm	6 mm	50/pack
8"	eFD8-200-3-eM-04-H-PNK	eFD0006-eM-04-H-PNK	200 mm	3 mm	100/pack
8"	eFD8-200-6-eM-04-H-PNK	eFD0001-eM-04-H-PNK	200 mm	6 mm	50/pack
***8"	eFD8-205-3-eM-04-H-PNK	eFD0013-eM-04-H-PNK	205 mm	3 mm	100/pack
***8"	eFD8-205-6-eM-04-H-PNK	eFD0012-eM-04-H-PNK	205 mm	6 mm	50/pack
12"	eFD12-300-3-eM-04-H-PNK	eFD0009-eM-04-H-PNK	300 mm	3 mm	100/pack
12"	eFD12-300-6-eM-04-H-PNK	eFD0003-eM-04-H-PNK	300 mm	6 mm	50/pack

***FOR USE WITH WAFER JAR ONLY

Material code options:

Material	Code	SR
Closed-cell polyethylene	eM-04-H-PNK	10e5-10e11



[RETURN TO TABLE OF CONTENTS](#)

FOAM PACKING MATERIALS

- JAR LINERS-

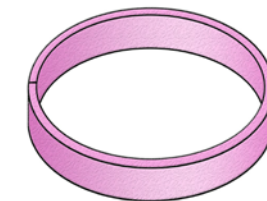
Jar Liner– ESD sensitive cushioning material for use with Wafer Jars only

Wafer Size	ePAK Description	ePAK Order Code	Foam Length	Foam Width	Foam Thickness	Std Pack Quantity
4"	eFL4-345-22-3-eM-04-H-PNK	eFL0022-eM-04-H-PNK	345 mm	22 mm	3 mm	25/pack
4"	eFL4-345-31-3-eM-04-H-PNK	eFL0028-eM-04-H-PNK	345 mm	31 mm	3 mm	25/pack
4"	eFL4-362-48-6-eM-04-H-PNK	eFL0023-eM-04-H-PNK	362 mm	48 mm	6 mm	25/pack
4"	eFL4-345-59.5-3-eM-04-H-PNK	eFL0029-eM-04-H-PNK	345 mm	59.5 mm	3 mm	25/pack
5"	eFL5-435-37-6-eM-04-H-PNK	eFL0039-eM-04-H-PNK	435 mm	37 mm	6 mm	25/pack
5"	eFL5-435-48-6-eM-04-H-PNK	eFL0056-eM-04-H-PNK	435 mm	48 mm	6 mm	25/pack
5" (see Note#1)	eFL5-474-19-13-eM-04-H-PNK	eFL0030-eM-04-H-PNK	474 mm	19 mm	13 mm	25/pack
5" (see Note#2)	eFL5-474-37-13-eM-04-H-PNK	eFL0007-eM-04-H-PNK	474 mm	37 mm	13 mm	25/pack
5" (see Note#3)	eFL5-474-75-13-eM-04-H-PNK	eFL0008-eM-04-H-PNK	474 mm	75 mm	13 mm	25/pack
6"	eFL6-518-19-6-eM-04-H-PNK	eFL0012-eM-04-H-PNK	518 mm	19 mm	6 mm	50/pack
6"	eFL6-518-37-6-eM-04-H-PNK	eFL0002-eM-04-H-PNK	518 mm	37 mm	6 mm	50/pack
6"	eFL6-518-48-6-EM-04-H-PNK	eFL0062-eM-04-H-PNK	518 mm	48 mm	6 mm	50/pack
6"	eFL6-518-75-6-eM-04-H-PNK	eFL0003-eM-04-H-PNK	518 mm	75 mm	6 mm	50/pack
8"	eFL8-712-22-13-eM-04-H-PNK	eFL0013-eM-04-H-PNK	712 mm	22 mm	13 mm	25/pack
8"	eFL8-712-50-13-eM-04-H-PNK	eFL0001-eM-04-H-PNK	712 mm	50 mm	13 mm	25/pack

Notes#1 This 5" wafer configuration utilizes the 6" (eJR-167-20-EM-04-H-PNK) Jar, 6" (eFL6-518-19-6-eM-04-H-PNK) Liner, and this 5" (eFL5-474-19-13-eM-04-H-PNK) Liner

Notes#2 This 5" wafer configuration utilizes the 6" (eJR-167-38-EM-04-H-PNK) Jar, 6" (eFL6-518-37-6-eM-04-H-PNK) Liner, and this 5" (eFL5-474-37-13-eM-04-H-PNK) Liner

Notes#3 This 5" wafer configuration utilizes the 6" (eJR-167-76-EM-04-H-PNK) Jar, 6" (eFL6-518-75-6-eM-04-H-PNK) Liner, and this 5" (eFL5-474-75-13-eM-04-H-PNK) Liner



Material code options

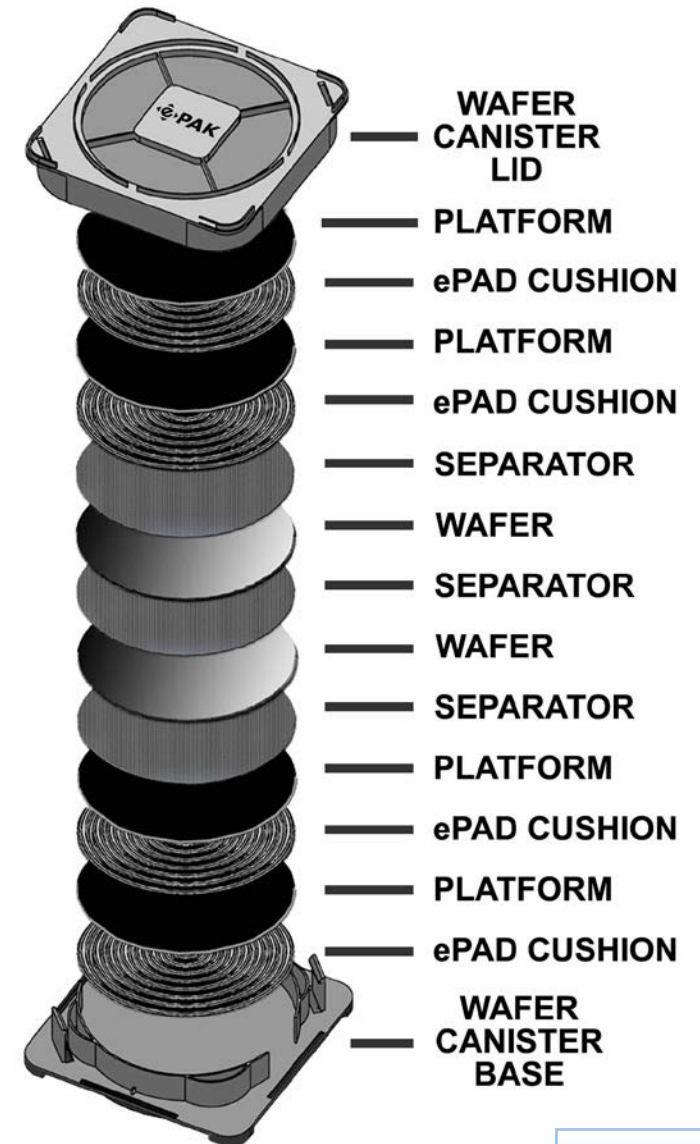
Material	Code	SR
Closed-cell polyethylene	eM-04-H-PNK	10e5-10e11

[RETURN TO TABLE OF CONTENTS](#)

ePAD™* WAFER PROTECTION SYSTEM

High performance alternative to foam-based solutions

- Made from proprietary, low-ionic, flexible, conductive polystyrene
- Ideal for both Cu and Al metallized wafers
- Best choice for both long and short term storage needs
- Available for 6", 8" and 12" wafer sizes



(PATENTS: US #7425362, Singapore #105587, Japan #4205540, Taiwan #I297662, PRC#ZL 03 2 07819.6)

[RETURN TO TABLE OF CONTENTS](#)

ePAD™ Thermal Formed Wafer Cushion – Particle free, vacuum formed, cushioning material for wafer stack

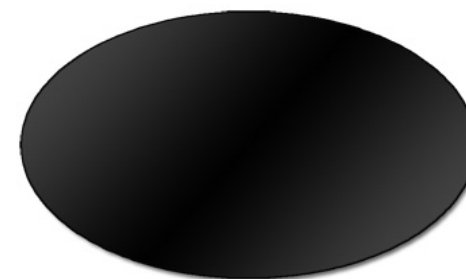
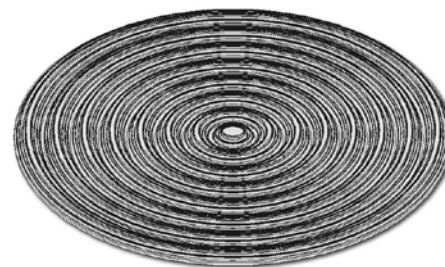
Wafer Size	ePAK Description	ePAK Order Code	Diameter	Thickness	Std Pack Quantity
6"	eWP6-150-3-x	eVT0208-x	150 mm	3 mm	50/box
6"	eWP6-150-5-x	eVT0048-x	150 mm	5 mm	50/box
8"	eWP8-200-3-x	eVT0209-x	200 mm	3 mm	50/box
8"	eWP8-200-5-x	eVT0030-x	200 mm	5 mm	50/box
12"	eWP12-300-5-x	eVT0210-x	300 mm	5 mm	50/box

ePAD™ Wafer Platform – Provides the flat surface required for the proper function of the ePAD system

Wafer Size	ePAK Description	ePAK Order Code	Diameter	Thickness	Std Pack Quantity
6"	eFP6-150-0.8-x	eVT0049-x	150 mm	0.8 mm	50/box
8"	eFP8-200-0.8-x	eVT0050-x	200 mm	0.8 mm	50/box
12"	eFP12-300-0.8-x	eVT0211-x	300 mm	0.8 mm	50/box

Material code options for all ePAD™ Thermal Formed Wafer packing materials (-x in P/N):

Material	Code	SR
Proprietary conductive PS	eM-20-BLK	10e4-10e11



(PATENTS: US #7425362, Singapore #105587, Japan #4205540, Taiwan #I297662, PRC#ZL 03 2 07819.6)

[RETURN TO TABLE OF CONTENTS](#)

VACUUM-FORMED WAFER SHIPPING BOXES

- Designed to hold 25 wafers by the edge
- Economical solution for small wafers
- 2 piece design includes Lid and Base



Product info:

Wafer Size	ePAK Description	ePAK Order Code	Internal Diameter	Material Options
1"	eV8-1/25-25-Base/Lid-0.8-ASSY-1	eVT0404-ASSY-1	25 mm	eM-21
2"	eV8-2/50-25-Base/Lid-0.8-ASSY-#	eVT0241-ASSY-#	50 mm	eM-20, eM-21
2" SQ	eV10-2/50.8-25-1.0-ASSY-2	eVT1199-ASSY-2	2" Square	eM-21
2.5"	eV10-2.5/63.5-25-Base/Lid-0.8-ASSY-#	eVT0406-ASSY-#	63.5 mm	eM-20, eM-21
3"	eV10-3/76-25-Base/Lid-1.3-ASSY-1	eVT0242-ASSY-1	76 mm	eM-21
3"	eV10-3/76-25-Base/Lid-0.8-ASSY-1	eVT0294-ASSY-1	76 mm	eM-21
4"	eV12-4/100-25-Base/Lid-0.7-ASSY-1	eVT0293-ASSY-1	100 mm	eM-21
4"	eV12-4/103-25-Base/Lid-1.3-ASSY-1	eVT0405-ASSY-1	103 mm	eM-21
6"	eV15-6/150-13-Base/Lid-1.5-ASSY-1	eVT0736-ASSY-1	150 mm	eM-21

Material code options (–x in P/N):

Material	Code	SR
Clear PS	eM-21-CLR	n/a
Proprietary conductive PS	eM-20-BLK	10e4-10e11

[RETURN TO TABLE
OF CONTENTS](#)

WAFER SHIPPING BOXES



- Designed to hold multiple wafers by the edge
- 3 piece design includes Top, Cassette, and Base
- Designed to interface with automated equipment
- Clean Room plastic shipping bags available

Product info

Wafer Size	ePAK Description	ePAK Order Code	Internal Diameter	Number of Wafers Held
1"	eMS-1/25.4-25-R.1-ASSY-#	eWB0302-ASSY-#	25.4 mm	25
2"	eMS-2/50-25-ASSY-#	eWB0028-ASSY-#	50 mm	25
** 2"	eMS-2/50-25-R.2-ASSY-#	eWB0340-ASSY-#	50 mm	25
2.5"	eMS-2.5/61.75-25-ASSY-#	eWB0105-ASSY-#	61.75 mm	25
3"	eMS-3/76-25-ASSY-#	eWB0029-ASSY-#	76 mm	25
** 3"	eMS-3/76-25-R.3-ASSY-#	eWB0297-ASSY-#	76 mm	25
4"	eMS-4/100-10-ASSY-#	eWB0258-ASSY-#	100 mm	10
4"	eMS-4/100-25-ASSY-#	eWB0259-ASSY-#	100 mm	25
6"	eMS-6/150-10-ASSY-#	eWB0286-ASSY-#	150 mm	10
6"	eMS-6/150-10-R.1-ASSY-#	eWB0347-ASSY-#	150 mm	10

**notes: eWB0340 & eWB0297 are for thinned wafers (<0.4mm)



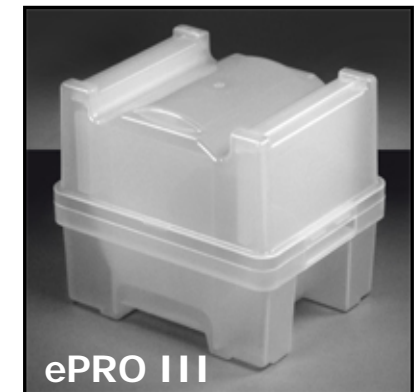
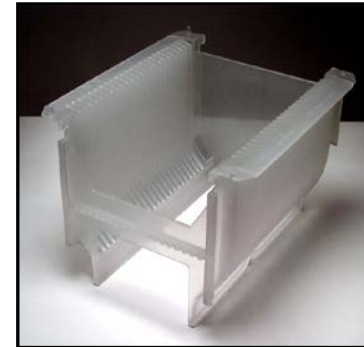
Material code options:

Material	Code	SR
Conductive PP	eM-01-BLK	10e4-10e5
Natural PP	eM-08-NAT	n/a

[RETURN TO TABLE OF CONTENTS](#)

ePRO™ * WAFER SHIPPING BOXES

- Designed to hold 25 wafers by the edge
- Made from ultra-clean PP material
- 3 piece design includes Lid, Cassette, and Base
- Protective shipping OverPAKs available...[see products](#)



Product info

Wafer Size	ePAK Description	Internal Diameter
4"	ePRO-4/100-25-ASSY-#	100 mm
4"	ePRO II-4/100-25-ASSY-#	100 mm
4"	ePRO III-4/100-25-ASSY-#	100 mm
5"	ePRO-5/125-25-ASSY-#	125 mm
5"	ePRO II-5/125-25-ASSY-#	125 mm
5"	ePRO III-5/125-25-ASSY-#	125 mm
6"	ePRO-6/150-25-ASSY-#	150 mm
6"	ePRO II-6/150-25-ASSY-#	150 mm
6"	ePRO III-6/150-25-ASSY-#	150 mm
8"	ePRO-8/200-25-ASSY-#	200 mm
8"	ePRO II-8/200-25-ASSY-#	200 mm
8"	ePRO III-8/200-25-ASSY-#	200 mm

Please contact ePAK or your local agent to discuss all options available to fit your requirements.

Material code options:

Material	Code	SR
Natural PP	eM-08-NAT	n/a

(PATENTS: US 7967146, US D639154, Taiwan M356220, Singapore 150443)

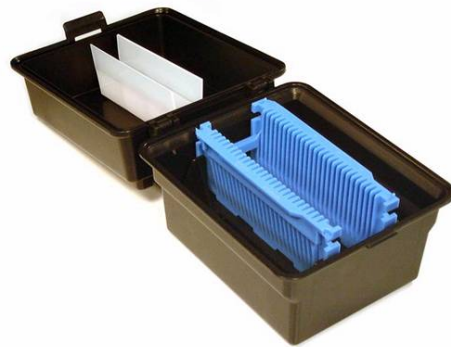
[RETURN TO TABLE OF CONTENTS](#)



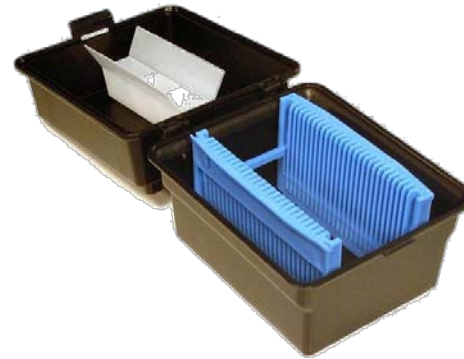


2", 3" & 4" PROCESS BOATS & BOXES

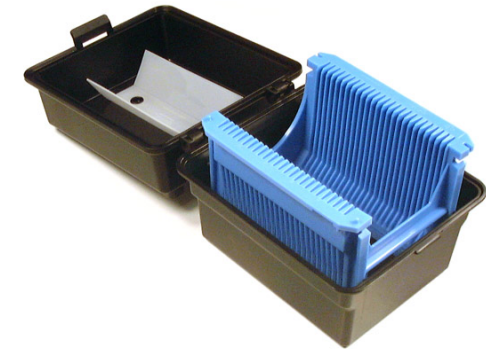
(For Process Boat ordering information, see product details on Page 20)



ePB-2/50-25-x-y
inside
ePBX-2-ASSY-#



ePB-3/76-25-x-y
inside
ePBX-3-ASSY-#



inside
ePBX-4-ASSY-#

2", 3" & 4" Storage Box Product info

Wafer Size	ePAK Description	ePAK Order code	Notes
2"	ePBX-2-ASSY-#	eWB0095-ASSY-#	Requires shelf to hold cassette, cushion available
3"	ePBX-3-ASSY-#	eWB0123-ASSY-#	Optional shelf for R.2, R.3 and R.6 cassettes, cushion available
3"	ePBX-3-R.1-ASSY-#	eWB0260-ASSY-#	Low height lid, no cushion available
3"	ePBX-3-R.2-ASSY-#	eWB0433-ASSY-#	Small body box, cushion available
4"	ePBX-4-ASSY-#	eWB0124-ASSY-#	Cushion available
4" (2 cassettes)	ePBX-5/125-2-ASSY-#	eWB0097-ASSY-#	5" x 2 cassette box with special shelf holds 2 x 4" cassettes

Material code info:

Material	Code	SR
Conductive Polypropylene (Black only)	eM-01-BLK	10e4-10e5
Polypropylene (Multiple Color Options →)	eM-08-(color code)	n/a

Color code info

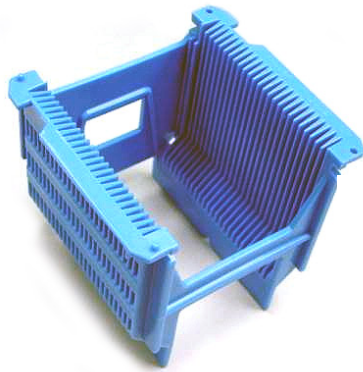
BLU = Blue
GRN = Green
RED = Red
YLW = Yellow

[RETURN TO TABLE OF CONTENTS](#)

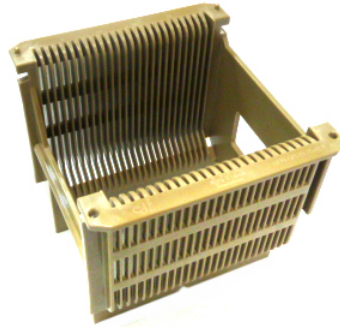


5" PROCESS BOATS & BOXES

(For ordering information, see product details on Pages 20-23)



ePB-5/125-25-x-y



ePB-5/125-25-R.1-eM-61-BRW



ePB-5/125-25-R.2-x-y



ePB-5/125-25-R.4-eM-47-BLK



ePB-5/125-25-R.5-x-y



ePBX-5/125-ASSY-#



ePBX-5/125-R.1-ASSY-#



ePBX-5/125-2-ASSY-#



[RETURN TO TABLE OF CONTENTS](#)

6" PROCESS BOATS & BOXES

(For ordering information, see product details on Pages 21-23)



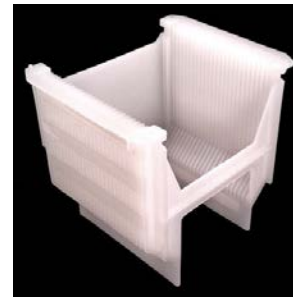
ePB-6/150-25-x-y



ePB-6/150-25-R.1-x-y



ePB-6/150-25-R.2-eM-47-BLK



ePB-6/150-25-R.4-eM-56



ePB-6/150-25-R.6-x-y



ePB-6/150-25-R.9-x-y



ePB-6/150-12-x-y



ePB-6/150-15-x-y



ePB-6/150-18-x-y



ePB-6/150-18-R.1-eM-47-BLK



ePBX-6/150-ASSY-#



ePBX-6/150-R.1-ASSY-#



ePBX-6/150-R.3-ASSY-#



ePBX-6/150-R.5-ASSY-#



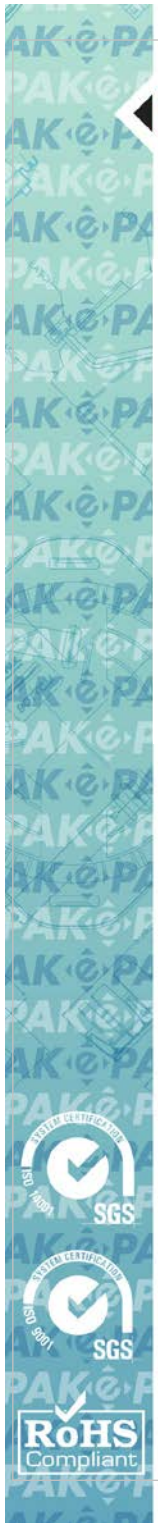
ePBX-6/150-R.10-ASSY-#



ePBX-6/150-2-ASSY-#



[RETURN TO TABLE OF CONTENTS](#)



8" PROCESS BOATS & BOXES

(For ordering information, see product details on Pages 22 - 23)



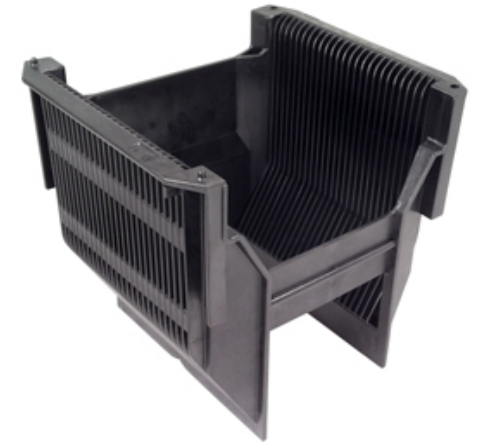
ePB-8/200-25-eM-45-BLK



ePB-8/200-25-R.2-x-y



ePB-8/200-13-x-y



ePB-8/200-25-R.9-eM-47



ePBX-8/200-ASSY-#



ePBX-8/200-R.1-ASSY-#



ePBX-8/200-R.3-ASSY-#



ePBX-8/200-R.6-ASSY-#

[RETURN TO TABLE OF CONTENTS](#)

PFA PROCESS CASSETTES



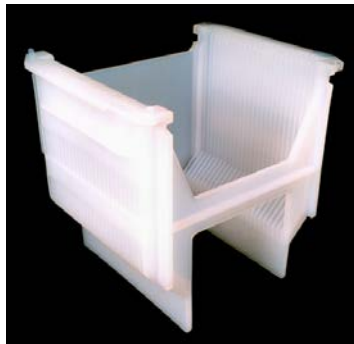
ePB-2/50-25-R.1-eM-39-NAT



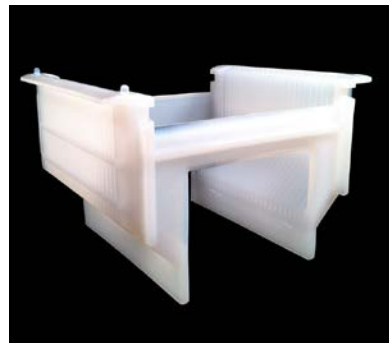
ePB-3/76-25-R.6-eM-39-NAT



ePB-4/100-25-R.9-eM-39-NAT



ePB-6/150-25-R.8-eM-39-NAT



ePB-6/150-25-R.10-eM-39-NAT



ePB-8/200-25-R.6-eM-39-NAT



ePB-8/200-25-R.10-eM-39-NAT



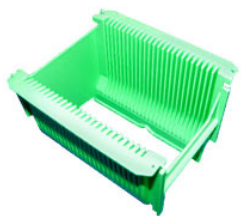
ePB-6/150-18-R.2-eM-39-NAT



ePB-6/150-25-R.11-eM-39-NAT



[RETURN TO TABLE OF CONTENTS](#)



PROCESS BOATS

Wafer Size	ePAK P/N Description	ePAK Order Code	Materials available	Notes	Internal Diameter	Slots
2"	ePB-2/50-25-x-y	eWB0031-x-y	eM-01-BLK, eM-08-y, eM-56-NAT	-	50 mm	25
2"	ePB-2/50-25-R.1-eM-39-NAT	eWB0316-eM-39-NAT	eM-39-NAT	-	50 mm	25
2.5"	ePB-2.5/63.5-25-eM-39-NAT	eWB0405-eM-39-NAT	eM-39-NAT	-	63.5mm	25
3"	ePB-3/76-25-x-y	eWB0032-x-y	eM-01-BLK, eM-08-y, eM-56-NAT	-	76 mm	25
3"	ePB-3/76-25-R.2-x-y	eWB0092-x-y	eM-01-BLK, eM-08-y, eM-56-NAT	-	76 mm	25
3"	ePB-3/76-25-R.3-x-y	eWB0096-x-y	eM-01-BLK, eM-08-y, eM-56-NAT	-	76 mm	25
3"	ePB-3/76-25-R.4-x-y	eWB0276-x-y	eM-01-BLK, eM-08-y, eM-56-NAT	-	76 mm	25
3"	ePB-3/76-25-R.5-eM-56	eWB0280-eM-56-NAT	eM-56-NAT	(note: 3" boat in a 5" Outline)	76 mm	25
3"	ePB-3/76-25-R.6-eM-39-NAT	eWB0306-eM-39-NAT	eM-39-NAT	-	76 mm	25
4"	ePB-4/100-25-x-y	eWB0049-x-y	eM-01-BLK, eM-08-y, eM-56-NAT	-	100 mm	25
4"	ePB-4/100-25-R.2-x-y	eWB0125-eM-56-NAT	eM-56-NAT	(note: 4" boat in a 5" Outline)	100 mm	25
4"	ePB-4/100-25-R.6-x-y	eWB0277-x-y	eM-01-BLK, eM-08-y, eM-56-NAT	-	100 mm	25
4"	ePB-4/100-25-R.8-x-y	eWB0308-x-y	eM-01-BLK, eM-08-y, eM-56-NAT	-	100 mm	25
4"	ePB-4/100-25-R.9-eM-39-NAT	eWB0309-eM-39-NAT	eM-39-NAT	"-W" Window Option available	100 mm	25
5"	ePB-5/125-25-x-y	eWB0088-x-y	eM-01-BLK, eM-08-y, eM-56-NAT	Window is Standard	125 mm	25
5"	ePB-5/125-25-R.1-eM-61-BRW	eWB098-eM-61-BRW	eM-61-BRW	"-N-" Notch Option available	125 mm	25
5"	ePB-5/125-25-R.2-x-y	eWB0114-x-y	eM-01-BLK, eM-08-y, eM-56-NAT	-	125 mm	25
5"	ePB-5/125-25-R.4-eM-47-BLK	eWB00229-eM-47-BLK	eM-47-BLK	"-N-" Notch Option available	125 mm	25
5"	ePB-5/125-25-R.5-x-y	eWB00300-x-y	eM-01-BLK, eM-08-y, eM-56-NAT	-	125 mm	25

Material code info ("x" in P/N):

Material	Code	SR
Conductive Polypropylene (Black color only)	eM-01-BLK	10e4-10e5
Polypropylene (Multiple Color Options →)	eM-08-y	n/a
PFA (No color option)	eM-39-NAT	n/a
PP+PTFE + CF (Dark Grey color only)	eM-45-BLK	10e4-10e10
PEEK + CF (No color option)	eM-47-BLK	≤10e9
Polyvinylidene Difluoride (PVDF, Natural color only)	eM-56-NAT	n/a

Color code info (-y in P/N)

NAT = Natural(no color added)
 BLU = Blue
 GRN = Green
 RED = Red
 YLW = Yellow

[RETURN TO TABLE OF CONTENTS](#)



PROCESS BOATS (continued)

6" Process Boats:

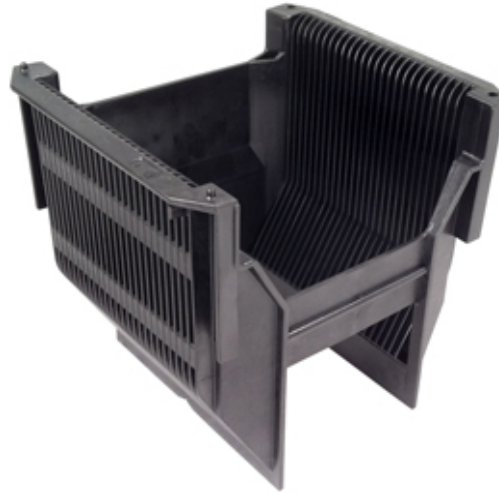
Wafer Size	ePAK P/N Description	ePAK Order Code	Materials Available	Notes and/or Alternative ePAK P/N (-N) =with Notch Option (-W) =with Window Option (-H) =with Handle Option	Internal Diameter	Slots
6"	ePB-6/150-25-x-y	eWB0051-x-y	eM-01-BLK, eM-08-y, eM-56-NAT	ePB-6/150-25-N-x-y	150 mm	25
6"	ePB-6/150-25-R.1-x-y	eWB0052-x-y	eM-01-BLK, eM-08-y, eM-56-NAT	ePB-6/150-25-R.1-N-x-y	150 mm	25
6"	ePB-6/150-25-R.2-N-eM-47-BLK	eWB0101-N-eM-47-BLK	eM-47-BLK	Notch is Standard	150 mm	25
6"	ePB-6/150-25-R.4-eM-56	eWB0153-eM-56	eM-56-NAT	ePB-6/150-25-R.4-N-eM-56	150 mm	25
6"	ePB-6/150-25-R.6-x-y	eWB0188-x-y	eM-01-BLK, eM-08-y, eM-56-NAT	ePB-6/150-25-R.6-N-x-y	150 mm	25
6"	ePB-6/150-25-R.8-eM-39-NAT	eWB0304-eM-39-NAT	eM-39-NAT	ePB-6/150-25-R.8-W-eM-39-NAT	150 mm	25
6"	ePB-6/150-25-R.9-x-y	eWB0307-x-y	eM-01-BLK, eM-08-y, eM-56-NAT	ePB-6/150-25-R.9-W-x-y	150 mm	25
6"	ePB-6/150-25-R.10-eM-39-NAT	eWB0318-eM-39-NAT	eM-39-NAT	Low Profile	150 mm	25
6"	ePB-6/150-25-R.11-eM-39-NAT	eWB0327-eM-39-NAT	eM-39-NAT	n/a	150 mm	25
6"	ePB-6/150-25-R.12-eM-39-NAT	eWB0342-eM-39-NAT	eM-39-NAT	Low Profile, No H-bar	150mm	25
6"	ePB-6/150-12-x-y	eWB0135-x-y	eM-01-BLK, eM-08-y, eM-56-NAT	ePB-6/150-12-N-x-y	150 mm	12
6"	ePB-6/150-15-x-y	eWB0359-x-y	eM-01-BLK, eM-08-y	Short length cassette, standard slots	150mm	15
6"	ePB-6/150-18-x-y	eWB0416-x	eM-01-BLK, eM-08-y	ePB-6/150-18-N-x-y	150mm	18
6"	ePB-6/150-18-R.1-eM-47-BLK	eWB0417-eM-47-BLK	eM-47-BLK	ePB-6/150-18-R.1-N-eM-47-BLK	150mm	18
6"	ePB-6/150-20-R.1-eM-39-NAT	eWB0372-eM-39-NAT	eM-39-NAT	n/a	150mm	20
159 mm	ePB-6/159-25-eM-47-BLK	eWB0207-eM-47-BLK	eM-47-BLK	ePB-6/159-25-N-eM-47-BLK	159 mm	25
159 mm	ePB-6/159-25-R.1-eM-39-NAT	eWB0208-eM-39-NAT	eM-39-NAT	ePB-6/159-25-R.1-N-eM-39-NAT	159 mm	25

Material code info ("x" in P/N):

Material	Code	SR	Material	Code	SR
Conductive Polypropylene (Black color only)	eM-01-BLK	10e4-10e5	PP+PTFE + CF (Dark Grey color only)	eM-45-BLK	10e4-10e10
Polypropylene ("-y" Multiple Color Options)	eM-08-y	n/a	PEEK + CF (No color option)	eM-47-BLK	≤10e9
PFA (No color option)	eM-39-NAT	n/a	PVDF (Natural color only)	eM-56-NAT	n/a

[RETURN TO TABLE OF CONTENTS](#)





8" Process Boats:

Wafer Size	ePAK P/N Description	ePAK Order Code	Materials Available	Notes and/or Alternative ePAK P/N (-N) =with Notch Option (-W) =with Window Option (-H) =with Handle Option	Internal Diameter	Slots
8"	ePB-8/200-25-eM-45-BLK	eWB0045-eM-45-BLK	eM-45-BLK	n/a	200 mm	25
8"	ePB-8/200-25-R.2-x-y	eWB0090-x-y	eM-01-BLK, eM-08-y, eM-56-NAT	n/a	200 mm	25
8"	ePB-8/200-13-x	eWB0182-x-y	eM-01-BLK, eM-08-y, eM-56-NAT	n/a	200 mm	13
8"	ePB-8/200-25-R.6-eM-39-NAT	eWB0220-eM-39-NAT	eM-39-NAT	n/a	200 mm	25
8"	ePB-8/200-25-R.9-eM-47-BLK	eWB0382-eM-47-BLK	eM-47-BLK	ePB-8/200-25-R.9-H-eM-47-BLK	200 mm	25
8"	ePB-8/200-25-R.10-eM-39-NAT	eWB0385-eM-39-NAT	eM-39-NAT	Low Profile	200 mm	25

Material code info ("x" in P/N):

Material	Code	SR	Material	Code	SR
Conductive Polypropylene (Black color only)	eM-01-BLK	10e4-10e5	PP+PTFE + CF (Dark Grey color only)	eM-45-BLK	10e4-10e10
Polypropylene ("-y" Multiple Color Options)	eM-08-y	n/a	PEEK + CF (No color option)	eM-47-BLK	≤10e9
PFA (No color option)	eM-39-NAT	n/a	PVDF (Natural color only)	eM-56-NAT	n/a

[RETURN TO TABLE OF CONTENTS](#)

PROCESS BOAT STORAGE BOXES



- Storage Boxes are Stackable
 - Available in many material options:
 - eM-01-BLK is equivalent to Entegris® Stat-Pro® 100 (PP + CP) material*
 - eM-08-NAT is natural PP material with many color options
 - eM-46-BLK is equivalent to Entegris® Stat-Pro® 175 (PP + CF) material*
- *(PP = Polypropylene, CF=Carbon Fiber, CP=Carbon Powder, PTFE= Polytetrafluoroethylene)

Product info:

Wafer Size	ePAK P/N Description	ePAK Order Code	Compatible with ePAK Process Cassettes
5"	ePBX-5/125-ASSY-#	eWB0078-ASSY-#	eWB0088-x-y, eWB0114-x-y
5"	ePBX-5/125-R.1-ASSY-#	eWB0127-ASSY-#	eWB0088-x-y, eWB0114-x-y
5"	ePBX-5/125-2-ASSY-#	eWB0097-ASSY-#	eWB0088-x-y, eWB0114-x-y eWB00300-x-y (BOX HOLDS 2 BOATS)
6"	ePBX-6/150-ASSY-#	eWB0070-ASSY-#	eWB0051-x-y, eWB0052-x-y, eWB0135-x-y
6"	ePBX-6/150-R.1-ASSY-#	eWB0073-ASSY-#	eWB0051-x-y, eWB0052-x-y, eWB0135-x-y
6"	ePBX-6/150-2-ASSY-#	eWB0111-ASSY-#	eWB0051-x-y, eWB0052-x-y, eWB0135-x-y (BOX HOLDS 2 BOATS)
6"	ePBX-6/150-R.3-ASSY-#	eWB0099-ASSY-#	eWB0051-x-y, eWB0052-x-y, eWB0135-x-y
6"	ePBX-6/150-R.5-ASSY-#	eWB0159-ASSY-#	eWB0051-x-y, eWB0052-x-y, eWB0135-x-y
6"	ePBX-6/150-R.10-ASSY-#	eWB0336-ASSY-#	eWB0051-x-y, eWB0052-x-y, eWB0135-x-y
6"	ePBX-6/150-R.11-ASSY-#	eWB0358-ASSY-#	eWB0359-x-y
159 mm	ePBX-6/159-ASSY-#	eWB0213-ASSY-#	eWB0207-eM-47-BLK, eWB0208-eM-39-NAT
8"	ePBX-8/200-ASSY-#	eWB0094-ASSY-#	eWB0045-x-y, eWB0090-x-y
8"	ePBX-8/200-R.1-ASSY-# **	eWB0100-ASSY-#	eWB0045-x-y, eWB0090-x-y, eWB0182-x-y**
8"	ePBX-8/200-R.3-ASSY-#	eWB0221-ASSY-#	eWB0045-x-y, eWB0090-x-y,
8"	ePBX-8/200-R.6-ASSY-#	eWB0338-ASSY-#	eWB0045-x-y, eWB0090-x-y,
8"	ePBX-8/200-R.7-X	eWB0367-ASSY-#	eWB0045-x-y, eWB0090-x-y,

**Please use Storage Box ePBX-8/200-R.1-eM-46 for Process Cassette PN: eWB0182-x-y (ePB-8/200-13-x) Please confirm with your sales person.

Material code info:

Material	Code	SR
Conductive Polypropylene (Black only)	eM-01-BLK	10e4-10e5
Polypropylene (Multiple Color Options →)	eM-08-NAT	n/a
PP+CF (Black only)	eM-46-BLK	10e4-10e10

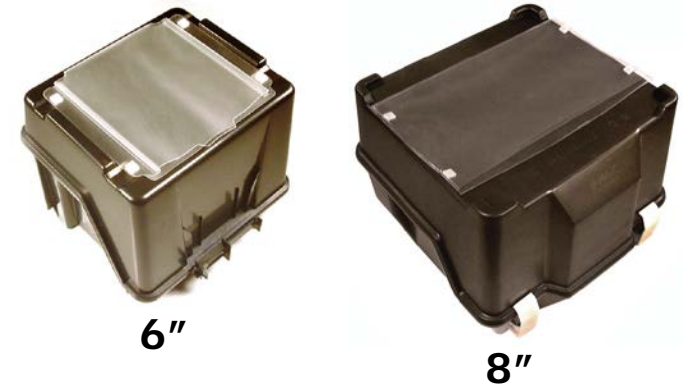
Color code info

NAT = Natural
 BLU = Blue
 GRN = Green
 RED = Red
 YLW = Yellow

[RETURN TO TABLE OF CONTENTS](#)

ENVELOPES FOR STORAGE BOXES

- Envelopes are manufactured using clear PVC
- Snaps are manufactured using white Nylon (eM-64)



Envelopes info:

Description	ePAK Order code	Anti-Static	Fits Boxes:
2"/3"/4" Envelope-ASSY-1	eOP0167-ASSY-1	YES	eWB0095, eWB0123, eWB0124, eWB0260/Competitor
2"/3"/4" Envelope-ASSY-2	eOP0167-ASSY-2	NO	eWB0095, eWB0123, eWB0124, eWB0260/Competitor
5" Envelope-ASSY-1	eOP0168-ASSY-1	YES	eWB0078, eWB0127/Competitor
5" Envelope-ASSY-2	eOP0168-ASSY-2	NO	eWB0078, eWB0127/Competitor
6" Envelope-ASSY-1	eOP0169-ASSY-1	YES	eWB0073, eWB0099, eWB0159, eWB0185/Competitor
6" Envelope-ASSY-2	eOP0169-ASSY-2	NO	eWB0073, eWB0099, eWB0159, eWB0185/Competitor
6" Envelope R.1-ASSY-1	eOP0197-ASSY-1	YES	eWB0073, eWB0099, eWB0159, eWB0185/Competitor
6" Envelope R.1-ASSY-2	eOP0197-ASSY-2	NO	eWB0073, eWB0099, eWB0159, eWB0185/Competitor
6" Envelope R.2-ASSY-1	eOP0256-ASSY-1	YES	eWB0073, eWB0099, eWB0159, eWB0185/Competitor
6" Envelope R.2-ASSY-2	eOP0256-ASSY-2	NO	eWB0073, eWB0099, eWB0159, eWB0185/Competitor
8" Envelope-ASSY-1	eOP0185-ASSY-1	NO	eWB0094, eWB0221/Competitor

Material code options:

Material	Code	SR
White Nylon (Snaps)	eM-64	n/a
Clear PVC	eM-68	n/a
Anti-Static Clear PVC	eM-66	<10e11

[RETURN TO TABLE OF CONTENTS](#)

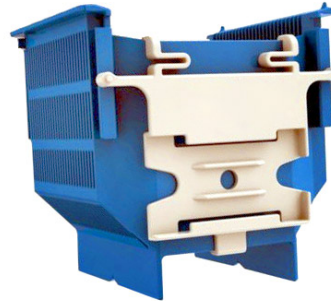
BADGE HOLDERS & CLIPS



BADGE HOLDER
Welded to Storage box



CARD HOLDER
Attached to
mWB0070



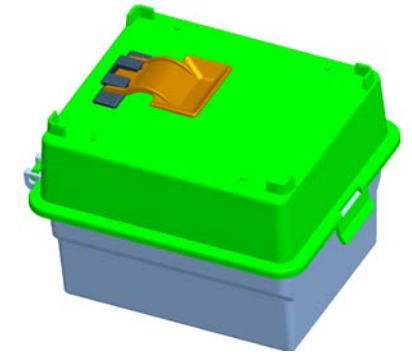
eCH6-A
Attached to Process Boat



ePB-4/100-Holder-x
& **eV8-78x25-Carrier-x**
Attached to 4" Process Boat



CARD HOLDER-R.1
Welded to
Process Boat



mOP0162 Assembly
(Attached to Box Lid)



mOP0370
(Attached to Box Lid)

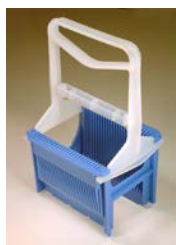
Product Description	Order Code	Application
Storage Box Clip (Pedestal)-eM-34	eOP0162(P)-eM-34-BLK or eM-08-y	Storage Box
Storage Box Clip (Spring)-eM-34	eOP0162(S)-eM-34-BLK or eM-08-y	Storage Box
BADGE HOLDER	eOP0163-eM-08-y	Multiple Application
CARD HOLDER	eOP0184-eM-01-BLK	mWB0070
CARD HOLDER-R.1	eOP0392-eM-01-BLK/eM-46-BLK	Multiple Application
eCH6-A	eOP0206-(eM-01-BLK or eM-08-y)	6" Process Cassettes (except PFA)
Storage Box Clip	eOP0370-eM-73	mWB0078
6" Paper Holder-x	eOP0718-x	mWB0073
ePB-4/100-Holder-x & eV8-78x25-Carrier-x	eOP0813-x & eVT1898-x	4" Process Cassette

Color code
(-y in P/N)

NAT = Natural
BLU = Blue
GRN = Green
RED = Red
YLW = Yellow

[RETURN TO TABLE
OF CONTENTS](#)

HANDLES FOR PROCESS BOATS



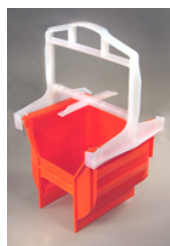
eOP0171



eOP0243



eOP0179



eOP0202-8-ASSY-2



eOP0202-8-ASSY-3

For Boat sizes	Description	ePAK Order code	Handle Style	Compatible Process Boats
2"	2" HANDLE ASSY-1	eOP0171-2-ASSY-1	Squeeze with lock bar	eWB0031, eWB0316
2.5"	2.5" HANDLE ASSY-1	eOP0171-2.5-ASSY-1	Squeeze with lock bar	eWB0405
3"	3" HANDLE ASSY-1	eOP0171-3-ASSY-1	Squeeze with lock bar	eWB0092, eWB0096, eWB0306
4"	4" HANDLE ASSY-1	eOP0171-4-ASSY-1	Squeeze with lock bar	eWB0049, eWB0277, eWB0308, eWB0309
5"	5" HANDLE ASSY-1	eOP0171-5-ASSY-1	Squeeze with lock bar	eWB0088, eWB0114, eWB00229, eWB00300
5"	5" HANDLE R.1 ASSY-1	eOP0179-5-ASSY-1	Slingshot	eWB0088, eWB0114, eWB00229, eWB00300
6"	6" HANDLE ASSY-1	eOP0171-6-ASSY-1	Squeeze with lock bar	eWB0051, eWB0052, eWB0101, eWB0135, eWB0153, eWB0188, eWB0304, eWB0307, eWB0327,
6"	6" HANDLE R.1 ASSY-1	eOP0179-6-ASSY-1	Slingshot	eWB0051, eWB0052, eWB0101, eWB0135, eWB0153, eWB0188, eWB0304, eWB0307, eWB0327,
6"	6" HANDLE-R.3-eM-39-NAT	eOP0243-eM-39-NAT	Squeeze with support bar	eWB0051, eWB0052, eWB0101, eWB0135, eWB0153, eWB0188, eWB0304, eWB0307, eWB0318, eWB0327
159mm	159 HANDLE ASSY-1	eOP0171-159-ASSY-1	Squeeze with lock bar	eWB0207, eWB0208
8"	8" HANDLE ASSY-2	eOP0202-8-ASSY-2	Squeeze with lock bar	eWB0045, eWB0090, eWB0182, eWB0220, eWB0380, eWB0382,
8"	8" HANDLE ASSY-3	eOP0202-8-ASSY-3	Squeeze with lock bar	eWB0385

Material codes		
Material	Code	SR
PFA	eM-39-NAT	n/a

[RETURN TO TABLE OF CONTENTS](#)

"COIN STYLE" SINGLE WAFER SHIPPERS*

Wafer Size	ePAK Description	ePAK Order Code	Internal Diameter	Std Pack Quantity
1" (25mm)	eCT1-25-ASSY-#	eWB0091-ASSY-#	25.4 mm	100 /carton
1.5" (38mm)	eCT1.5-38-ASSY-#	eWB0325-ASSY-#	39.6 mm	100 /carton
2" (50mm)	eCT2-50-ASSY-#	eWB0021-ASSY-#	52 mm	100 /carton
2.5" (63mm)	eCT2.5-63-ASSY-#	eWB0328-ASSY-#	65.5 mm	100 /carton
3" (76mm)	eCT3-76-ASSY-#	eWB0022-ASSY-#	78.6 mm	100 /carton
3.25" (82mm)	eCT3.25-82-ASSY-#	eWB0329-ASSY-#	85 mm	100 /carton
3.54" (90mm)	eCT3.54-90-ASSY-#	eWB0330-ASSY-#	92 mm	100 /carton
4" (100mm)	eCT4-100-ASSY-#	eWB0024-ASSY-#	104 mm	100 /carton
4" (100mm) (1)	eCT4-100-R.2-ASSY-#	eWB0192-ASSY-#	104 mm	100 /carton
4" (100mm) (3)	eCT4-100-R.3-ASSY-#	eWB0404-ASSY-#	100.6 mm	100 /carton
5" (125mm)	eCT5-125-ASSY-#	eWB0060-ASSY-#	127 mm	100 /carton
6" (150mm)	eCT6-150-ASSY-#	eWB0025-ASSY-#	152 mm	100 /carton
6" (150mm) (1)	eCT6-150-R.1-ASSY-#	eWB0281-ASSY-#	152 mm	100 /carton
6" (150mm) (2)	eCT6-150-R.2-ASSY-#	eWB0320-ASSY-#	152 mm	100 /carton



Notes:

- (1) Positive Locking Lid
- (2) Positive Locking Lid, Larger Label Area
- (3) Designed for Thin / Fragile wafers

Material code options:

Material	Code	SR
Natural PP	eM-08-NAT	n/a
LDPE (spring option only)	eM-11-NAT	n/a
Conductive PP	eM-01-BLK	10e4-10e5

(*PATENT PENDING)

[RETURN TO TABLE OF CONTENTS](#)



External packaging solution for our popular 2, 3, 4, and 6 inch Coin Style Single Wafer Shippers

Product Information:

- For the 2" Coin Style Shippers: 5 pcs per layer/15 pcs per box
- For the 3" Coin Style Shippers: 3 pcs per layer/ 9 pcs per box
- For the 4" Coin Style Shippers: 2 pcs per layer/ 6 pcs per box
- For the 6" Coin Style Shippers: 3 pcs per layer/ 9 pcs per box

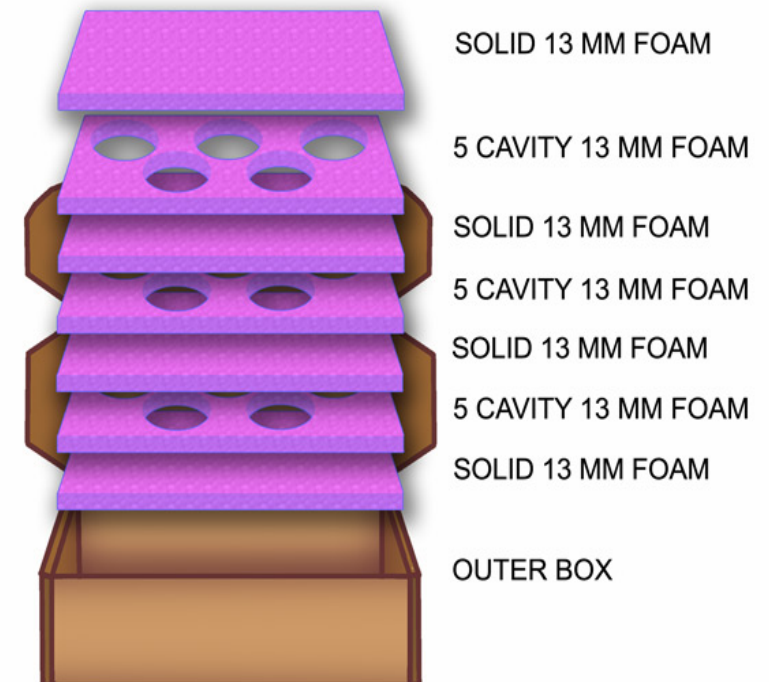
Each MASTERPAK™ contains:

- 1 pcs - cardboard outer box
- 3 pcs - Antistatic PE foam with cavities for shippers
- 4 pcs - Antistatic PE foam cushion layer-Solid

Ordering Information

Wafer Size	ePAK Description	ePAK Order Code	Shippers per box	Foam Thickness
2"	MASTERPAK-2	eMP0001	15	13 mm
3"	MASTERPAK-3	eMP0002	9	13 mm
4"	MASTERPAK-4	eMP0003	6	13 mm
6"	MASTERPAK-6	eMP0010	9	13 mm

SHOWING: MASTERPAK-2



Minimum Order Quantity:

20 Masterpaks™

Copyright © 2003 ePAK International, Inc.

[RETURN TO TABLE OF CONTENTS](#)



SINGLE WAFER SHIPPERS

(INJECTION MOLDED)

Clamshell Style Shippers - Hinged Single wafer shippers

Wafer Size	ePAK Description	ePAK Order Code	Internal Diameter	Internal Height	Std Pack Quantity
6" (150mm)	eCT6-150-0.7-ASSY-#	eWB0017-ASSY-#	150 mm	0.7 mm	15/carton
8" (200mm)	eCT8-200-0.7-ASSY-#	eWB0016-ASSY-#	200 mm	0.7 mm	10/carton



Material code options:

Material	Code	SR
Clear PC	eM-12-TRA	n/a
Conductive PC	eM-22-BLK	10e2-10e6

Coinstack Style Shippers – Single wafer shippers (Base with separate cover)

Wafer Size	ePAK Description	ePAK Order Code	Internal Diameter	Internal Height	Std Pack Quantity
12" (300mm)	eCT12-300-0.8-ASSY-#	eWB0053-ASSY-#	300 mm	0.8 mm	10/carton
18" (450mm)	eCT-450-0.7-ASSY-#	eWB0210-ASSY-#	450 mm	0.7 mm	10/carton

Material code options:

Material	Code	SR
Natural PP	eM-08-NAT	n/a
Conductive PP	eM-01-BLK	10e4-10e5



300mm



450mm

[RETURN TO TABLE OF CONTENTS](#)

SINGLE WAFER SHIPPERS

(INJECTION MOLDED)



Wafer Shells – Stacking Single wafer shippers

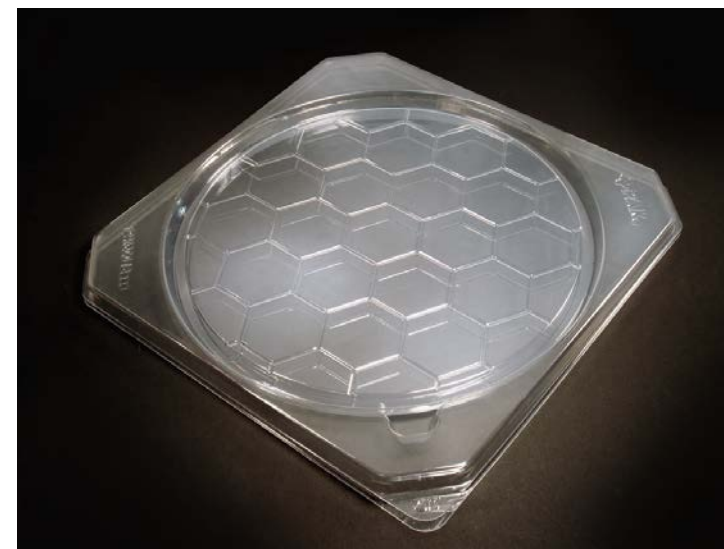
Wafer Size	ePAK Description	ePAK Order Code	Internal Diameter	Internal Height	Std Pack Quantity
6"	eCT6-150-1.0-x	eWB0068-x	150 mm	1.0 mm	100/carton
8"	eCT8-200-1.0-x	eWB0262-x	200 mm	1.0 mm	100/carton

Material code options (-x in P/N):

Material	Code	SR
Conductive PS	eM-100-BLK	10e4-10e9



[RETURN TO TABLE OF CONTENTS](#)



Vacuum Formed Shippers –Single wafer shippers

Wafer Size	ePAK Description	ePAK Order Code	Internal Diameter	Std Pack Quantity
8" (200mm)	eV10-8/200-ASSY-#	eVT1605-x	200 mm	40/carton
12" (300mm)	eV9-12/300-X	eVT1415-x	300 mm	20/carton

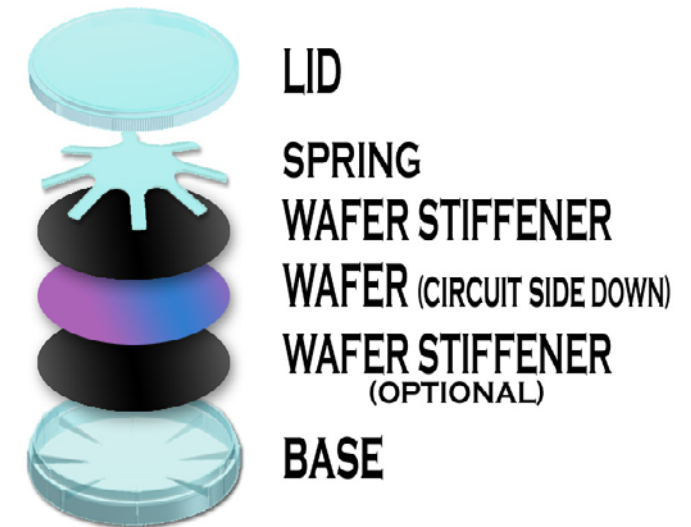
Material code options (-x in P/N):

Material	Code	SR
Proprietary conductive PS	eM-20-BLK	10e4-10e11
Clear PS material	eM-21-CLR	N/A
Anti-Static coated PS	eM-23	10e8-10e12
Clear, A/S coated, APET	eM-25	10e7-10e11

Wafer Stiffener – Support system for ultra-thin, brittle wafers

- Proprietary, ultra-pure material
- Adds rigidity to sensitive ultra-thin wafers

Wafer Size	ePAK Description	ePAK Order Code	Stiffener Diameter	Stiffener Thickness	Std Pack Quantity
1"	eWV1-25-0.25-x	eVT1128-x	25 mm	0.25 mm	100/pack
1"	eWV1-25-0.4-x	eVT1505-x	25 mm	0.40 mm	100/pack
2"	eWV2-50-0.25-x	eVT0171-x	50 mm	0.25 mm	100/pack
2"	eWV2-50-0.4-x	eVT0190-x	50 mm	0.40 mm	100/pack
3"	eWV3-76-0.25-x	eVT0191-x	76 mm	0.25 mm	100/pack
3"	eWV3-76-0.4-x	eVT0192-x	76 mm	0.40 mm	100/pack
3"	eWV3-76-0.5-x	eVT0193-x	76 mm	0.50 mm	100/pack
4"	eWV4-100-0.4-x	eVT0194-x	100 mm	0.40 mm	50/pack
4"	eWV4-100-0.6-x	eVT0195-x	100 mm	0.60 mm	50/pack
6"	eWV6-150-0.4-x	eVT0196-x	150 mm	0.40 mm	50/pack
6"	eWV6-150-0.6-x	eVT0197-x	150 mm	0.60 mm	50/pack
6"	eWV6-150-0.8-x	eVT0206-x	150 mm	0.80 mm	50/pack
8"	eWV8-200-0.6-x	eVT0198-x	200 mm	0.60 mm	50/pack
8"	eWV8-200-0.8-x	eVT0207-x	200 mm <td 0.80 mm	50/pack	
12"	eWV12-300-0.8-x	eVT0199-x	300 mm	0.80 mm	50/pack



Material code info (-x in P/N):

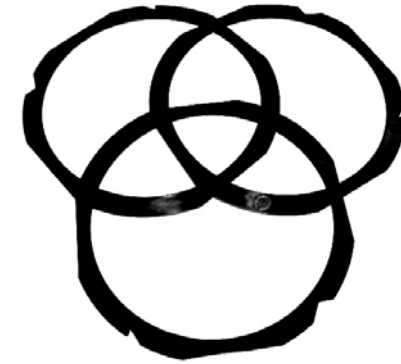
Material	Code	SR
Proprietary conductive PS	eM-20-BLK	10e4-10e11

(*PATENT PENDING)

[RETURN TO TABLE OF CONTENTS](#)

PLASTIC FLEX FRAMES

- Designed for 100, 125, 150, 200 and 300 mm wafers
- Low cost alternative to metal flex frames
- Designed to be used one time and then discarded
- Of special interest to those who ship wafers to customers on flex frames
 - No need to bear freight cost to return heavy metal frame
 - No need for cleaning metal frame before reuse
- Call for further details



Plastic Flex Frames –For shipping wafers mounted on tape

ePAK Description	ePAK Order Code	Flat to Flat	Internal Diameter	Internal Height	Std Pack Quantity	Available	<i>Fits into Flex Frame Shipper</i>
eFF6-150-2.5-eM-59	eOP0043-eM-59	217mm	194 mm	2.50 mm	200 /carton	NOW	eVT0415-x
eFF6-150-2.5-R.1-eM-59	eOP0067-eM-59	217mm	194 mm	2.50 mm	200 /carton	NOW	eVT0415-x
eFF6-150-2.2-R.3-eM-89	eOP0209-eM-89	215.9mm	185 mm	2.2 mm	200 /carton	NOW	eVT0415-x
eFF6-150-2-R.6-eM-59	eOP0304-eM-59	195mm	174 mm	2.0 mm	200 /carton	NOW	eVT1479-x
eFF6-150-2.0-R.7-eM-59	eOP0319-eM-59	212mm	194 mm	2.0 mm	200 /carton	NOW	eVT0302 & eVT1395
eFF6-150-2.2-R.8-eM-59	eOP0437-eM-59	216mm	185 mm	2.2 mm	200 /carton	NOW	eVT0415-x
eFF-200-2.0-R.2-eM-59	eOP0091-eM-59	276mm	250 mm	2.0 mm	200 /carton	NOW	eVT0320-x
eFF8-200-2.4-eM-59	eOP0064-eM-59	275mm	250 mm	2.40 mm	200 /carton	NOW	eVT0320-x
eFF8-200-2.6-eM-59	eOP0132-eM-59	276mm	250 mm	2.60 mm	200 /carton	NOW	eVT0320-x
eFF8-200-2.6-R.3-eM-59	eOP0494-eM-59	266mm	242 mm	2.60 mm	200 /carton	NOW	eVT0377-x
eFF12-300-3.5-eM-59	eOP0137-eM-59	380mm	350 mm	3.5 mm	200 /carton	NOW	eVT0287-x

Material code info:

Material	Code	SR
PPS Glass Reinforced	eM-59-BLK	n/a
SAN	eM-89	n/a

[RETURN TO TABLE OF CONTENTS](#)



METAL FLEX FRAMES

- 410 SS
- Hardness: RC 41 - 47
- 6 Inch and 8 Inch packed in carton quantities of 50
- 12 Inch packed in carton quantity of 25
- Other surface finishes available upon request
- Custom sizes and shapes available upon request



Metal Flex Frames –For shipping wafers mounted on tape

ePAK Description	ePAK Order Code	Flat to Flat	Internal Diameter	Internal Height	Std Pack Quantity
eMF-DTF-2-6-1	eOP0309	212 mm	194 mm	1.22 mm	50 /carton
eMF-350-103	eOP0310	215.9 mm	192.5 mm	1.22 mm	50 /carton
eMF-350-104	eOP0312	266.7 mm	242.32 mm	1.22 mm	50 /carton
eMF-DTF-2-8-1	eOP0311	276 mm	250 mm	1.22 mm	50 /carton
eMF-DTF-2-12	eOP0313	380 mm	350 mm	1.52 mm	25 /carton
eMF-450	eOP0574	556 mm	506 mm	2.0 mm	25/carton



[RETURN TO TABLE OF CONTENTS](#)

SINGLE FLEX FRAME SHIPPERS

- Designed for 100, 125, 150, 200 & 300mm wafers
- Available in uncoated, anti-static coated or conductive PS materials
- Call for further details.

Plastic Flex Frame Shippers: For shipping flex frames with mounted wafers

ePAK Description	ePAK Order Code	Std Pack Quantity	Frame dims Flat to Flat	Shipper Style	Frame Style
eFS6-150-R.1-x	eVT0302-x	50 /carton	212 mm	C	DISCO DTF 2-6-1
eFS6-150-R.2-x	eVT0303-x	50 /carton	195 mm	C	DISCO DTF 2-6
eFS6-150-R.3-x	eVT0415-x	50 /carton	216 mm	C	K&S 350-103
eFS6-150-R.5-x	eVT1384-x	50 /carton	216 mm	C	K&S 350-103
eFS6-150-R.6-ASSY-#	eVT1395-ASSY-#	50 /carton	212 mm	T	DISCO DTF 2-6-1
eFS6-150-R.9-x	eVT1479-x	50 /carton	195 mm	C	DISCO DTF 2-6
eFS6-150-R.12-x	eVT2253-x	50 /carton	212 mm	C	DISCO DTF 2-6-1
eFS8-200-R.1-x	eVT0304-x	25 /carton	Round Frame	C	Round Frame
eFS8-200-R.2-x	eVT0320-x	20 /carton	276 mm	C	DISCO DTF 2-8-1
eFS8-200-R.3-x	eVT0377-x	15 /carton	266 mm	C	K&S 350-104
eFS8-200-R.4-x	eVT0380-x	50 /carton	266 mm	C	K&S 350-104
eFS8-200-R.5-x	eVT0972-x	25 /carton	276 mm	C	DISCO DTF 2-8-1
eFS8-200-R.8-ASSY-#	eVT1650-ASSY-#	20 /carton	276 mm	T	DISCO DTF 2-8-1
eFS12-300-A-x	eVT0287-x	10 /carton	380 mm	C	SEMI G74 & G87
eFS12-300-R.1-ASSY-#	eVT0305-ASSY-#	10 /carton	380 mm	T	SEMI G74 & G87
eFS12-300-R.3-x	eVT1663-x	10 /carton	381 mm	C	SEMI G74 & G87
eFS18-450-x	eVT1723-x	10 /carton	556 mm	T	



**Clamshell
("C" Style)**



**Stacked Trays
("T" Style)**

Material code options (-x in P/N):

Material	Code	SR
Proprietary conductive PS	eM-20-BLK	10e4-10e11
Clear PS material	eM-21-CLR	N/A
Anti-Static coated PS	eM-23	10e9-10e11

[RETURN TO TABLE OF CONTENTS](#)

FLEX FRAME MULTI-SHIPPER

Plastic Flex Frame Multi-Shippers – For the vertical shipping of multiple Flex Frames with mounted wafers

Wafer Size	Frames Held	ePAK Description	ePAK Order Code	Flex Frame Height (Manuf.)
6 Inch	25 pcs	eFS6-150-25-R.1-ASSY-1	mWB0214-ASSY-1 (Conductive PP)	212 mm (DISCO outline)
	25 pcs	eFS6-150-25-R.1-ASSY-3	mWB0214-ASSY-3 (Natural PP)	212 mm (DISCO outline)
	25 pcs	eFS6-150-25-R.1-ASSY-2	mWB0214-ASSY-2 (Conductive PP)	216 mm (K&S outline)
	25 pcs	eFS6-150-25-R.1-ASSY-4	mWB0214-ASSY-4 (Natural PP)	216 mm (K&S outline)
8 Inch	25 pcs	eFS8-200-25-R.1-ASSY-1	eWB0152-ASSY-1 (Natural PP)	276 mm (DISCO outline)
	25 pcs	eFS8-200-25-R.1-ASSY-3	eWB0152-ASSY-3 (A/S impregnated Clear PP)	276 mm (DISCO outline)
	25 pcs	eFS8-200-25-R.1-ASSY-2	eWB0152-ASSY-2 (Natural PP)	266 mm (K&S outline)
	25 pcs	eFS8-200-25-R.1-ASSY-4	eWB0152-ASSY-4 (A/S impregnated Clear PP)	266 mm (K&S outline)
	25 pcs	eFS8-200-25-R.1-ASSY-5	eWB0152-ASSY-5 (Conductive PP)	276 mm (DISCO outline)
	25 pcs	eFS8-200-25-R.1-ASSY-6	eWB0152-ASSY-6 (Conductive PP)	266 mm (K&S outline)
	25 pcs	eFS8-200-25-R.1-ASSY-7	eWB0152-ASSY-7 (Cond. PP w/ eM-50 Spring)	276 mm (DISCO outline)
	25 pcs	eFS8-200-25-R.1-ASSY-8	eWB0152-ASSY-8 (Cond. PP w/ eM-50 Spring)	266 mm (K&S outline)
12 Inch	13 pcs	eFS12-300-13-ASSY-1	eWB0195-ASSY-1 (Natural PP w/ 1.5 Spring)	380 mm (SEMI G74) Metal
	13 pcs	eFS12-300-13-ASSY-2	eWB0195-ASSY-2 (Natural PP w/ 3.5 Spring)	380 mm (SEMI G87) Plastic
	13 pcs	eFS12-300-13-ASSY-3	eWB0195-ASSY-3 (Conductive PP w/ 1.5 Spring)	380 mm (SEMI G74) Metal
	13 pcs	eFS12-300-13-ASSY-4	eWB0195-ASSY-4 (Conductive PP w/ 3.5 Spring)	380 mm (SEMI G87) Plastic



150mm



200mm



300mm

Material code options:

Material	Code	SR
Conductive PP	eM-01-BLK	10e4-10e5
Natural PP	eM-50-NAT	N/A

Protective shipping OverPAKS™ available...[see products](#)

[RETURN TO TABLE OF CONTENTS](#)

FLEX FRAME CANISTERS



Canister for 212mm & 216mm frames
(150mm)



Canister for 266mm & 276mm frames
(200mm)



Canister for 380mm frames
(300mm)

Plastic Flex Frame Canisters –For horizontal/coinstack shipping of multiple Flex Frames with mounted wafers

Wafer Size	Internal Height	ePAK Description	ePAK Order Code	Flex Frame Dim (Flat to Flat) (Manuf.)
6" (150mm)	40mm	eFSC6-150-40-ASSY-1	eWB0323-ASSY-1	212mm (DISCO outline)
6" (150mm)	40mm	eFSC6-150-40-ASSY-2	eWB0323-ASSY-2	216mm (K&S outline)
8" (200mm)	81mm	eFSC8-200-81-266-R.1-ASSY-1	eWB0394-ASSY-1	266mm (K&S outline)
8" (200mm)	81mm	eFSC8-200-81-276-R.1-ASSY-1	eWB0387-ASSY-1	276mm (DISCO outline)
12" (300mm)	109mm	eFSC12-300-109-R.2-ASSY-2	eWB0448-ASSY-2	380mm

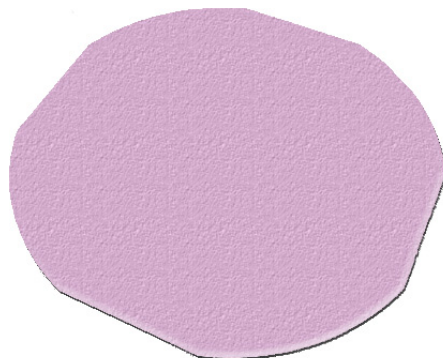
Material code options:

Material	Code	SR
Conductive PP	eM-01-BLK	10e4-10e5

- A range of cushion disks and separators are available. Please see next page.
- Protective shipping OverPAKS™ available...[see products](#)

[RETURN TO TABLE OF CONTENTS](#)

FLEX FRAME CANISTER ACCESSORIES



Cushion Disks –ESD sensitive Cushioning material for use with Canisters and Jars

Wafer Size	FITS CANISTER PN:	ePAK Description	ePAK Order Code	Foam Dim (Flat to Flat)	Foam Thickness	Std Pack Quantity
6"	eWB0323 (ALL ASSY)	eFD-225-6-eM-04-H-PNK	eFD0052-eM-04-H-PNK	225mm	6 mm	50/pack
8"	eWB0394	eFD8-265/265-3-eM-04-H-PNK	eFD0083-eM-04-H-PNK	266mm	3 mm	100/pack
8"	eWB0394	eFD8-265/265-6-eM-04-H-PNK	eFD0084-eM-04-H-PNK	266mm	6 mm	50/pack
8"	eWB0387	eFD8-275/275-3-eM-04-H-PNK	eFD0058-eM-04-H-PNK	276mm	3 mm	100/pack
8"	eWB0387	eFD8-275/275-6-eM-04-H-PNK	eFD0059-eM-04-H-PNK	276mm	6 mm	50/pack
12"	eWB0448	eFD12-378/378-R.1-3-eM-04-H-PNK	eFD0081-eM-04-H-PNK	378mm	3 mm	50/pack
12"	eWB0448	eFD12-378/378-R.1-6-eM-04-H-PNK	eFD0080-eM-04-H-PNK	378mm	6 mm	50/pack

Material code options:

Material	Code	SR
Closed-cell polyethylene	eM-04-H-PNK	10e5-10e11

[RETURN TO TABLE OF CONTENTS](#)



FLEX FRAME CANISTER ACCESSORIES

Separators: For use between wafers on frames

Wafer Size	FITS CANISTER PN:	ePAK Description	ePAK Order Code	Interleaf Dim (Flat to Flat)	Separator Thickness	Std Pack Quantity
Anti-static spun PO (Tyvek®)						
6"	eWB0323	eIL-225-0.16-eM-03-A-WHT	eIL0096-eM-03-A-WHT	225 mm	0.16 mm	250/pack
8"	eWB0394	eIL8-265/265-0.16-eM-03-A-WHT	eIL0151-eM-03-A-WHT	265 mm	0.16 mm	250/pack
8"	eWB0387	eIL8-275/275-0.16-eM-03-A-WHT	eIL0102-eM-03-A-WHT	275 mm	0.16 mm	250/pack
12"	eWB0448	eIL12-398-0.16-eM-03-A-WHT	eIL0097-eM-03-A-WHT	378mm	0.16 mm	250/pack
Separators- ESD PS (Smooth eM-20-BLK)						
8"	eWB0394	eIL8-265/265-0.13-eM-20-BLK	eIL0149-eM-20-BLK	265 mm	0.13 mm	250/pack
8"	eWB0387	eIL8-275/275-0.13-eM-20-BLK	eIL0146-eM-20-BLK	276 mm	0.13 mm	250/pack
12"	eWB0448	eIL12-378/378-0.16-eM-20-BLK	eIL0147-eM-20-BLK	378mm	0.16 mm	250/pack
Separators- ESD PS (Embossed eM-20-BLK)						
6"	eWB0323	eIL-225-0.07-eM-20-BLK	eIL0091-eM-20-BLK	225 mm	0.07 mm	250/pack
8"	eWB0387	eIL8-275/275-0.13-EMBOSSSED-eM-20-BLK	eIL0157-eM-20-BLK	275 mm	0.13 mm	250/pack

Material code info:

Material	Code	SR
Anti-static spun PO (Tyvek®)	eM-03-A-WHT	10e6-10e11
Proprietary conductive PS	eM-20-BLK	10e4-10e11

Moisture Barrier Bags:

Wafer Size	FITS CANISTER PN:	ePAK Description	ePAK Order Code	Width (mm)	Length (mm)	Material Thickness	Std Pack Quantity
6"	eWB0323	eBAG-330X380X0.08-eM-41	eOP0078-19-eM-41	330	380	0.08 mm	500/carton
8"	eWB0394 & eWB0387	eBAG-483X585X0.08-eM-41	eOP0690-eM-41	483	585	0.08 mm	500/carton

Material code info:

Material	Code	SR
Metalized PET+PET+CPE	eM-41	10e6-10e11

[RETURN TO TABLE OF CONTENTS](#)



HOOP RINGS

Hoop Rings: (X) is material code, (Y) is color code

ePAK Description	ePAK Order Code	Diameter	Ring Height	Locator Notch	Standard Color	Std Pack Quantity
eHR-122/134-6-IN-X-Y	eOP0062-x-y	ID=122 mm	6 mm	No	Grey	200 /carton
eHR-122/134-6-OUT-X-Y	eOP0063-x-y	OD=134 mm	6 mm	No	Blue	200 /carton
eHR-140/152-6-IN-X-Y	eOP0051-x-y	ID=140 mm	6 mm	No	Grey	200 /carton
eHR-140/152-6-OUT-X-Y	eOP0050-x-y	OD=152 mm	6 mm	No	Blue	200 /carton
eHR-170/186-6-IN-X-Y	eOP0049-x-y	ID=170 mm	6 mm	Yes	Grey	200 /carton
eHR-170/186-6-OUT-X-Y	eOP0048-x-y	OD=186 mm	6 mm	Yes	Blue	200 /carton
eHR-170/186-6-IN-R.2-X-Y	eOP0340-x-y	ID=170 mm	6 mm	Yes	Yellow	200 /carton
eHR-170/186-6-OUT-R.2-X-Y	eOP0339-x-y	OD=186 mm	6 mm	Yes	Red	200 /carton
eHR-195/210-6-IN-X-Y	eOP0066-x-y	ID=195 mm	6 mm	No	Black	200 /carton
eHR-195/210-6-OUT-X-Y	eOP0065-x-y	OD=210 mm	6 mm	No	Green	200 /carton
eHR-195/210-6-IN-R.1-X-Y	eOP0235-x-y	ID=195 mm	6 mm	No	Black	200 /carton
eHR-195/210-6-OUT-R.1-X-Y	eOP0236-x-y	OD=210 mm	6 mm	No	Green	200 /carton
eHR-195/210-6-OUT-R.2-X-Y	eOP0755-x-y	OD=210 mm	6 mm	Yes	Green	200 /carton
eHR-225/241-6-IN-X-Y	eOP0183-x-y	ID=225 mm	6 mm	No	Yellow	200 /carton
eHR-225/241-6-OUT-X-Y	eOP0182-x-y	OD=241 mm	6 mm	No	Red	200 /carton
eHR-228/248-7-IN-X-Y	eOP0342-x-y	ID=227.7mm	7mm	No	Yellow	100/carton
eHR-228/248-7-OUT-X-Y	eOP0341-x-y	OD=248mm	7mm	No	Red	100/carton
eHR-330/347-6-IN-X-Y	eOP0327-x-y	ID=330 mm	6mm	No	Black	50 /carton
eHR-330/347-6-OUT-X-Y	eOP0326-x-y	OD=347 mm	6mm	No	Yellow	50 /carton

NOTE: The word "UP" printed is ePAK Standard style. For printing the word "RADIUS" please add "-R" to end of the ePAK Order Code

Material code info (-X in P/N):

Material	Code	SR
MPC	eM-16-Y	N/A

Color code info (-Y in P/N)

Colors:	B = Blue
	G = Green
	GY = Grey
	Y = Yellow

[RETURN TO TABLE OF CONTENTS](#)

HOOP RING SHIPPERS

Single Hoop Ring Shippers – Designed to hold single Hoop Ring assembly with wafer and tape

ePAK Description	ePAK Order Code	ID/OD of ring set(s) held	Std Pack Quantity	Materials Options
eV11-HRS-195/210.170/186-x	eVT0289-x	195/210 & 170/186	50 /carton	eM-20-BLK, eM-21-CLR, eM-23
eV11-HRS-140/152-x	eVT0336-x	140mm/152mm and 115mm/126.75mm	100 /carton	eM-20-BLK, eM-21-CLR, eM-23
eV11-HRS-140/152-R.1-X	eVT0680-x	140mm/152mm and 115mm/126.75mm	100 /carton	eM-20-BLK, eM-21-CLR, eM-23
eV10-HRS-170/186-x	eVT0244-x	170mm/186mm	50 /carton	eM-20-BLK, eM-21-CLR, eM-23
eHS-195/210-x	eWB0217-195/210-x	195mm/210mm	20 /carton	eM-12, eM-22
eV12-HRS-225/241-x	eVT0939-x	225mm/241mm	30 /carton	eM-20-BLK, eM-21-CLR, eM-23
eV20-HRS-330/347-x	eVT1465-x	330mm/347mm	20 /carton	eM-20-BLK, eM-21-CLR, eM-23

Note: eVT0336 fits loosely around rings, eVT0680 fits snug to outer hoop rings

Material code info (-x in P/N):

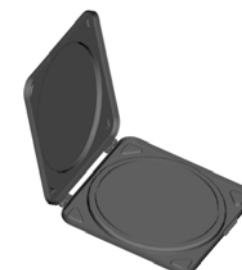
Material	Code	SR
Proprietary conductive PS	eM-20-BLK	10e4-10e11
Clear PS material	eM-21-CLR	N/A
Anti-Static coated Clear PS	eM-23-CLR	10e8-10e11
Clear PC	eM-12-TRA	n/a
Conductive PC	eM-22-BLK	10e2-10e6



eV11-HRS-195/210.170/186-x



eV10-HRS-170/186-x



eHS-195/210-x



eJR-210-65-x

Hoop Ring Shippers – Designed to hold multiple Hoop Ring assemblies with wafer and tape

ePAK Description	ePAK Order Code	OD of ring set(s) held	Materials Options
eJR-210-65-X	eWB0256-x	210mm	eM-01-BLK, eM-08-NAT

[RETURN TO TABLE OF CONTENTS](#)

GLASS SUBSTRATE SHIPPERS

Round Glass:

Substrate Size	ePAK Description	ePAK Order Code	Max Substrates per Shipper
170x1.5	eGBX-170x1.5-X	eWB0162-x	1
160x1.65	eGBX-160X1.65-20-X	eWB0163-x	20
180x1.65	eGBX-180X1.65-20-X	eWB0165-x	20



Material Code info for adapter plates ONLY(-x in P/N):

Material	Code	SR
PS	eP-28	n/a
ABS	eM-73	n/a

Rectangular Glass:

Substrate Size	Cassette Description	ePAK Order Code	Max Substrates per Cassette
180x230	ePB-180X230-25-X	eWB0178-x	25

Substrate Size	Box Description	ePAK Order Code	Compatible with Cassette:
180x230	ePBX-180X230-ASSY-#	eWB0179-ASSY-#	ePB-180X230-25-X

Material Code info (-x in P/N):

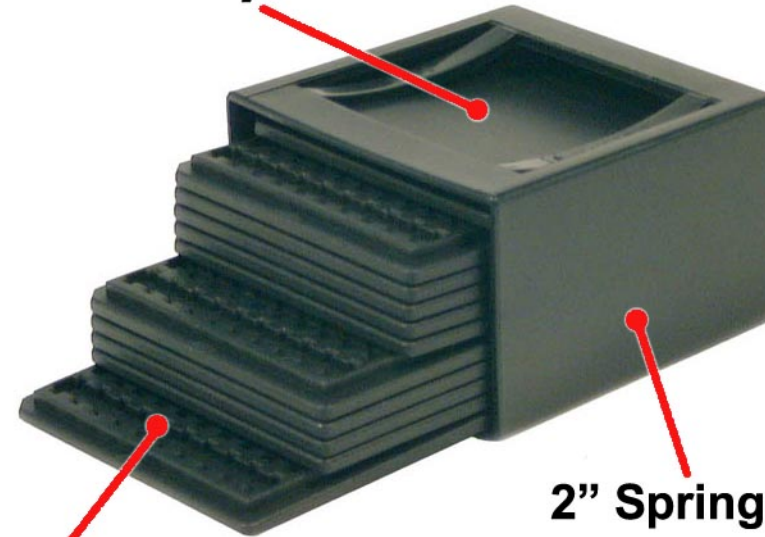
Material	Code	SR
Conductive PP	eM-01-BLK	10e4-10e5
Natural PP (Multi Shipper only)	eM-50-NAT	N/A
**Polyvinylidene Difluoride (PVDF)	eM-56-NAT	n/a

** PVDF Material option is for Cassette only.



[RETURN TO TABLE OF CONTENTS](#)

2" Dice Tray Cover



2" Spring Box

2" Dice Tray

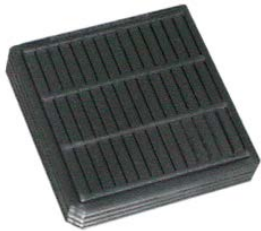
- Flexible packing system
- Fast tooling cycle time
- Standardized outline and full set of accessories including caps, clips and cover tray
- Convenient carrier for sample die, finished IC or other small components
- Contact ePAK today to discuss your custom chip tray solution





CHIP TRAY SYSTEM

Chip Tray Open Tooling: 2" X 2" TRAYS



Tray size	Chip Size	Thick	Matrix	Chip Tray Description	Order Code	Material Options (-x)	Std Pack Quantity
2" x 2"	0.84X1.3	0.3	16X22	eD2-0.84X1.3X0.3-1622-X	eDT0036-X	eM-22-BLK	2000 /carton
2" x 2"	0.89X0.89	0.38	20X20	eD2 0.89X0.89X0.38 2020 X	eDT0178-X	eM-22-BLK	2000 /carton
2" x 2"	0.89X0.89	0.38	20X20	eD2 0.89X0.89X0.38 2020 R.1 X	eDT0199-X	eM-22-BLK	2000 /carton
2" x 2"	0.9X1.05	0.35	16X16	eD2 0.90X1.05X0.35 1616 X	eDT0209-X	eM-22-BLK	2000 /carton
2" x 2"	0.98X1.15	0.35	16X16	eD2 0.98X1.15X0.35 1616 X	eDT0214-X	eM-22-BLK	2000 /carton
2" x 2"	1.02X1.02	0.61	20X20	eD2 1.02X1.02X0.61 2020 X	eDT0202-X	eM-22-BLK	2000 /carton
2" x 2"	1.07x1.55	0.33	20x16	eD2 1.07X1.55X0.33 2016 X	eDT0238-X	eM-22-BLK	2000 /carton
2" x 2"	1.07X1.55	0.51	10X10	eD2 1.07X1.55X0.51 1010 X	eDT0198-X	eM-22-BLK	2000 /carton
2" x 2"	1.10X1.30	0.60	16X16	eD2 1.10X1.30X0.60 1616 X	eDT0203-X	eM-22-BLK	2000 /carton
2" x 2"	1.1X1.3	0.35	10X10	eD2 1.10X1.30X0.35 1010 X	eDT0218-X	eM-22-BLK	2000 /carton
2" x 2"	1.10X1.47	0.8	14X16	eD2-1.10X1.47X0.80-1416-X	eDT0067-X	eM-22-BLK	2000 /carton
2" x 2"	1.21X1.15	0.85	16X16	eD2 1.21X1.15X0.85 1616 X	eDT0161-X	eM-22-BLK	2000 /carton
2" x 2"	1.21X1.15	0.65	16X16	eD2 1.21X1.15X0.65 1616 X	eDT0168-X	eM-22-BLK	2000 /carton
2" x 2"	1.22x2.10	0.62	10x10	eD2 1.22X2.10X0.62 1010 X	eDT0226-X	eM-153-BLK	2000 /carton
2" x 2"	1.23X0.83	0.7	15X16	eD2 1.23X0.83X0.70 1516 X	eDT0187-X	eM-22-BLK	2000 /carton
2" x 2"	1.27X1.25	0.35	20X20	eD2 1.27X1.25X0.35 2020 X	eDT0213-X	eM-22-BLK	2000 /carton
2" x 2"	1.27X1.55	0.35	10X10	eD2 1.27X1.55X0.35 1010 X	eDT0212-X	eM-22-BLK	2000 /carton
2" x 2"	1.38x1.88	0.33	11x10	eD2 1.38X1.88X0.33 1110 X	eDT0234-X	eM-153-BLK	2000 /carton
2" x 2"	1.40X0.89	0.51	24X19	eD2-1.40X0.89X0.51-2419-X	eDT0064-X	eM-22-BLK	2000 /carton
2" x 2"	1.43X1.0	0.8	15X18	eD2-1.43X1.0X0.8-1518-X	eDT0103-X	eM-22-BLK	2000 /carton
2" x 2"	1.4X1.4	0.34	12x12	eD2 1.40X1.40X0.34 1212 X	eDT0224-X	eM-153-BLK	2000 /carton
2" x 2"	1.4X1.4	0.61	20X20	eD2 1.40X1.40X0.61 2020 X	eDT0179-X	eM-22-BLK	2000 /carton

Material code options (-x in P/N):

Material	Code	SR	Material	Code	SR
Conductive PP	eM-01-BLK	10e4-10e5	ABS	eM-24	n/a
Conductive PP	eM-09-BLK	<10e6	Conductive PP	eM-37-BLK	10e4-10e6
Conductive PS	eP-16-BLK	10e4-10e7	Conductive PC	eM-153-BLK	10e5-10e9
Conductive PC	eM-22-BLK	10e4-10e5			

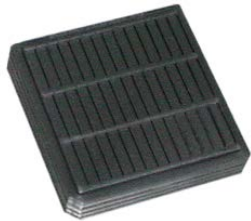
[RETURN TO TABLE OF CONTENTS](#)





CHIP TRAY SYSTEM (CONTINUED)

2" X 2" TRAYS (continued)



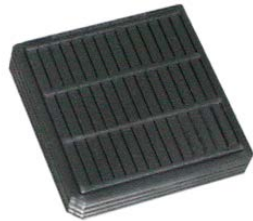
Tray size	Chip Size	Thick	Matrix	Chip Tray Description	Order Code	Material Options (-x)	Std Pack Quantity
2" x 2"	1.50x1.00	0.62	10x10	eD2 1.50X1.00X0.62 1010 X	eDT0232-X	eM-22-BLK	2000 /carton
2" x 2"	1.52X1.52	0.3	20X20	eD2 1.52X1.52X0.30 2020 X	eDT0157-X	eM-22-BLK	2000 /carton
2" x 2"	1.55X1.0	0.35	10X10	eD2 1.55X1.00X0.35 1010 X	eDT0216-X	eM-22-BLK	2000 /carton
2" x 2"	1.55X2.60	1.1	13X10	eD2-1.55X2.60X1.10-1310-X	eDT0086-X	eM-22-BLK	2000 /carton
2" x 2"	1.58X0.98	1.05	10X10	eD2 1.58X0.98X1.05 1010 X	eDT0180-X	eM-22-BLK	2000 /carton
2" x 2"	1.65X1.65	0.61	10X10	eD2-1.65X1.65X0.61-1010-X	eDT0061-X	eM-22-BLK	2000 /carton
2" x 2"	1.7X1.1	0.35	10X10	eD2 1.70X1.10X0.35 1010 X	eDT0220-X	eM-22-BLK	2000 /carton
2" x 2"	1.73X2.13	0.75	11X10	eD2 1.73X2.13X0.75 1110 X	eDT0169-X	eM-22-BLK	2000 /carton
2" x 2"	1.8X1.9	0.35	10X10	eD2 1.80X1.90X0.35 1010 X	eDT0217-X	eM-22-BLK	2000 /carton
2" x 2"	1.83X2.29	0.46	12X16	eD2-1.83X2.29X0.46-1216-X	eDT0063-X	eM-22-BLK	2000 /carton
2" x 2"	1.84X1.35	0.74	15X20	eD2 1.84X1.35X0.74 1520 X	eDT0208-X	eM-22-BLK	2000 /carton
2" x 2"	1.91X1.91	0.61	18X18	eD2 1.91X1.91X0.61 1818 X	eDT0204-X	eM-22-BLK	2000 /carton
2" x 2"	2.03X2.03	0.61	13X13	eD2 2.03X2.03X0.61 1313 X	eDT0207-X	eM-22-BLK	2000 /carton
2" x 2"	2.25X2.47	1.12	10X11	eD2-2.25X2.47X1.12-1011-X	eDT0072-X	eM-22-BLK	2000 /carton
2" x 2"	2.29X2.29	0.61	10X10	eD2-2.29X2.29X0.61-1010-X	eDT0051-X	eM-22-BLK	2000 /carton
2" x 2"	2.29X2.29	0.61	10X10	eD2 2.29x2.29x0.61 1010 R.1 X	eDT0182-X	eM-22-BLK	2000 /carton
2" x 2"	2.30X1.90	0.8	11X12	eD2-2.30X1.90X0.80-1112-X	eDT0101-X	eM-22-BLK, eM-24	2000 /carton
2" x 2"	2.30X3.80	1.1	8X10	eD2-2.30X3.80X1.10-0810-X	eDT0093-X	eM-22-BLK	2000 /carton
2" x 2"	2.34X2.83	1.1	11X10	eD2-2.34X2.83X1.10-1110-X	eDT0073-X	eM-22-BLK	2000 /carton
2" x 2"	2.36X3.75	1.1	8X11	eD2-2.36X3.75X1.10-0811-X	eDT0085-X	eM-22-BLK	2000 /carton
2" x 2"	2.74X1.37	1.1	9X14	eD2-2.74X1.37X1.10-0914-X	eDT0047-X	eM-22-BLK	2000 /carton
2" x 2"	2.74X3.18	1.1	9X9	eD2-2.74X3.18X1.1-0909-X	eDT0044-X	eM-22-BLK	2000 /carton

Material code options (-x in P/N):

Material	Code	SR	Material	Code	SR
Conductive PP	eM-01-BLK	10e4-10e5	ABS	eM-24	n/a
Conductive PP	eM-09-BLK	<10e6	Conductive PP	eM-37-BLK	10e4-10e6
Conductive PS	eP-16-BLK	10e4-10e7	Conductive PC	eM-153-BLK	10e5-10e9
Conductive PC	eM-22-BLK	10e4-10e5			



2" X 2" TRAYS (continued)



Tray size	Chip Size	Thick	Matrix	Chip Tray Description	Order Code	Material Options (-x)	Std Pack Quantity
2" x 2"	2.79X1.98	0.51	11X14	eD2 2.79X1.98X0.51 1114 X	eDT0185-X	eM-22-BLK	2000 /carton
2" x 2"	2.8X2.8	0.9	10X10	eD2-2.8-2.8X0.9-1010-X	eDT0015-X	eM-22-BLK	2000 /carton
2" x 2"	2.80X3.40	0.8	10X9	eD2-2.80X3.40X0.80-1009-X	eDT0094-X	eM-22-BLK, eM-24	2000 /carton
2" x 2"	2.8X4.07	1.1	9X8	eD2-2.8X4.07X1.1-0908-X	eDT0046-X	eM-22-BLK	2000 /carton
2" x 2"	2.92X1.82	0.9	10X13	eD2 2.92X1.82X0.90 1013 X	eDT0129-X	eM-22-BLK	2000 /carton
2" x 2"	2.96X1.35	0.9	9X14	eD2 2.96X1.35X0.90 0914 X	eDT0117-X	eM-22-BLK	2000 /carton
2" x 2"	3.05X8.55	0.49	10X4	eD2 3.05X8.55X0.49 1004 X	eDT0125-X	eM-22-BLK	2000 /carton
2" x 2"	3.14X3.69	0.75	8X7	eD2 3.14X3.69X0.75 0807 X	eDT0170-X	eM-22-BLK	2000 /carton
2" x 2"	3.2X3.2	1.1	10X10	eD2 3.2X3.2X1.1 1010 X	eDT0126-X	eM-22-BLK	2000 /carton
2" x 2"	3.28X3.08	1.1	9X9	eD2-3.28X3.08X1.1-0909-X	eDT0045-X	eM-22-BLK	2000 /carton
2" x 2"	3.3X3.3	0.9	10X10	eD2-3.3X3.3X0.9-1010-X	eDT0016-X	eM-01-BLK	2000 /carton
2" x 2"	3.48X2.38	0.8	7X9	eD2 3.48X2.38X0.80 0709 X	eDT0173-X	eM-22-BLK	2000 /carton
2" x 2"	3.7X1.65	0.35	8X14	eD2 3.70X1.65X0.35 0814 X	eDT0211-X	eM-22-BLK	2000 /carton
2" x 2"	3.71X4.07	0.7	7x7	eD2 3.71X4.07X0.70 0707 X	eDT0221-X	eM-153-BLK	2000 /carton
2" x 2"	3.76X1.8	0.25	9X15	eD2 3.76X1.80X0.25 0915 X	eDT0206-X	eM-22-BLK	2000 /carton
2" x 2"	3.8X2.2	0.7	10X10	eD2-3.8X2.2X0.7-1010-X	eDT0017-X	eM-01-BLK	2000 /carton
2" x 2"	3.89X1.85	0.79	17X9	eD2-3.89X1.85X0.79-1709	eDT0030-X	eP16,eM-22-BLK	2000 /carton
2" x 2"	4.08x6.52	0.58	7x5	eD2 4.08X6.52X0.58 0705 X	eDT0231-X	eM-153-BLK	2000 /carton
2" x 2"	4.1x5.63	0.58	7x5	eD2 4.10X5.63X0.58 0705 X	eDT0229-X	eM-153-BLK	2000 /carton
2" x 2"	4.11X2.90	0.8	7X9	eD2 4.11X2.90X0.80 0709 X	eDT0172-X	eM-22-BLK	2000 /carton
2" x 2"	4.3X2.3	0.35	7X10	eD2 4.30X2.30X0.35 0710 X	eDT0219-X	eM-22-BLK	2000 /carton
2" x 2"	4.46X2.55	0.66	8X14	eD2 4.46X2.55X0.66 0814 X	eDT0177-X	eM-22-BLK	2000 /carton

Material code options (-x in P/N):

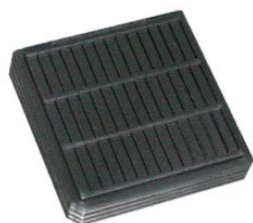
Material	Code	SR	Material	Code	SR
Conductive PP	eM-01-BLK	10e4-10e5	ABS	eM-24	n/a
Conductive PP	eM-09-BLK	<10e6	Conductive PP	eM-37-BLK	10e4-10e6
Conductive PS	eP-16-BLK	10e4-10e7	Conductive PC	eM-153-BLK	10e5-10e9
Conductive PC	eM-22-BLK	10e4-10e5			

[RETURN TO TABLE OF CONTENTS](#)



CHIP TRAY SYSTEM (CONTINUED)

2" X 2" TRAYS (continued)

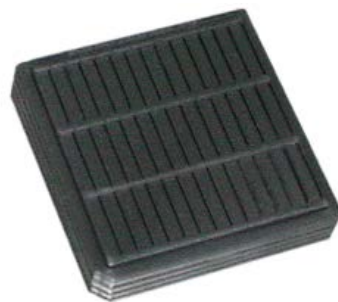


Tray size	Chip Size	Thick	Matrix	Chip Tray Description	Order Code	Material Options (-x)	Std Pack Quantity
2" x 2"	4.46X2.55	0.66	8X14	eD2 4.46X2.55X0.66 0814 R.1 X	eDT0200-X	eM-22-BLK	2000 /carton
2" x 2"	4.50X3.10	0.75	6x7	eD2 4.50X3.10X0.75 0607 X	eDT0225-X	eM-22-BLK	2000 /carton
2" x 2"	4.52X4.12	0.58	7x7	eD2 4.52X4.12X0.58 0707 X	eDT0223-X	eM-153-BLK	2000 /carton
2" x 2"	4.53X4.53	0.75	6X6	eD2 4.53X4.53X0.75 0606 X	eDT0186-X	eM-22-BLK	2000 /carton
2" x 2"	4.59X5.91	0.85	7X5	eD2 4.59X5.91X0.85 0705 X	eDT0048-X	eM-22-BLK	2000 /carton
2" x 2"	4.74X2.35	1.1	7X10	eD2 4.74X2.35X1.10 0710 X	eDT0082-X	eM-22-BLK	2000 /carton
2" x 2"	5.08X13.46	0.76	3X7	eD2 5.08X13.46X0.76 0307 X	eDT0062-X	eM-22-BLK	2000 /carton
2" x 2"	5.15X1.15	1.8	10X6	eD2-5.115X1.15X1.8-1006-X	eDT0007-X	eM-09-BLK	2000 /carton
2" x 2"	5.15X11.5	1.8	5x3	eD2 5.15X11.50X1.80 0503 X	eDT0113-X	eM-22-BLK	2000 /carton
2" x 2"	5.30X5.30	0.9	6X6	eD2 5.30X5.30X0.9 0606 X	eDT0049-X	eM-22-BLK	2000 /carton
2" x 2"	5.75X2.36	1.1	5X11	eD2 5.75X2.36X1.10 0511 X	eDT0081-X	eM-22-BLK	2000 /carton
2" x 2"	6.35X6.35	0.61	6X6	eD2 6.35X6.35X0.61 0606 X	eDT0060-X	eM-22-BLK	2000 /carton
2" x 2"	6.80X2.30	1.1	5X10	eD2 6.80X2.30X1.10 0510 X	eDT0098-X	eM-22-BLK	2000 /carton
2" x 2"	6.87X2.92	0.48	5X9	eD2 6.87X2.92X0.48 0509 X	eDT0188-X	eM-22-BLK	2000 /carton
2" x 2"	8.55X2.95	0.49	4X10	eD2 8.55X2.95X0.49 0410 X	eDT0119-X	eM-22-BLK	2000 /carton
2" x 2"	9.8X2.8	0.55	11X4	eD2-9.8X2.8X0.55-1104-X	eDT0022-X	eM-24	2000 /carton
2" x 2"	12.8X2.39	0.9	14X3	eD2-12.8X2.39X0.9-1403-X	eDT0002-X	eM-01-BLK	2000 /carton
2" x 2"	13X11	0.8	2X3	eD2-13X11X0.8-203-X	eDT0010-X	eM-01-BLK, eM-09	2000 /carton
2" x 2"	40X40	1.76	1X1	eD2-40X40X1.1-X	eDT0043-X	eM-22-BLK	2000 /carton

Material code options (-x in P/N):

Material	Code	SR	Material	Code	SR
Conductive PP	eM-01-BLK	10e4-10e5	ABS	eM-24	n/a
Conductive PP	eM-09-BLK	<10e6	Conductive PP	eM-37-BLK	10e4-10e6
Conductive PS	eP-16-BLK	10e4-10e7	Conductive PC	eM-153-BLK	10e5-10e9
Conductive PC	eM-22-BLK	10e4-10e5			

[RETURN TO TABLE OF CONTENTS](#)



3" X 3" TRAYS

Tray size	Chip Size	Thick	Matrix	Chip Tray Description	Order Code	Material Options (-x)	Std Pack Quantity
3" x 3"	8.41X1.91	0.03	20X6	eD3-8.41X1.91X0.30-2006-X	eDT0069-X	eM-22-BLK	2000 /carton

4" X 4" TRAYS

Tray size	Chip Size	Thick	Matrix	Chip Tray Description	Order Code	Material Options (-x)	Std Pack Quantity
4" x 4"	1.25X1.15	0.3	20X20	eD4-1.25X1.15X0.3-2020-X	eDT0028-X	eM-22-BLK	2000 /carton
4" x 4"	2.55X2.55	1.85	20X20	eD4 2.55X2.55X1.85 2020-X	eDT0121-X	eM-22-BLK	2000 /carton
4" x 4"	2.70X2.20	1.00	21X24	eD4 2.70X2.20X1.00 2124 X	eDT0123-X	eM-22-BLK	2000 /carton
4" x 4"	3.41X3.16	1.21	10X10	eD4 3.41X3.16X1.21 1010 X	eDT0079-X	eM-22-BLK	2000 /carton
4" x 4"	4.21X4.21	0.75	15X15	eD4 4.21X4.21X0.75 1515 X	eDT0144-X	eM-22-BLK	2000 /carton
4" x 4"	4.95x2.08	0.50	12x24	eD4 4.95X2.08X0.50 1224 X	eDT0253-X	eM-22-BLK	2000 /carton
4" x 4"	6.5X6.5	0.7	11X11	eD4 6.5X6.5X0.7 1111 X	eDT0122-X	eM-22-BLK	2000 /carton
4" x 4"	6.66X4.16	1.55	15X5	eD4 6.66X4.16X1.55 1505-X	eDT0095-X	eM-22-BLK	2000 /carton
4" x 4"	8.15X5.65	1.62	13X05	eD4 8.15X5.65X1.62 1305-X	eDT0124-X	eM-22-BLK	2000 /carton
4" x 4"	13X13	2	6X6	eD4 13X13X2.0 0606-X	eDT0083-X	eM-22-BLK	2000 /carton

Material code options (-x in P/N):

Material	Code	SR	Material	Code	SR
Conductive PP	eM-01-BLK	10e4-10e5	ABS	eM-24	n/a
Conductive PP	eM-09-BLK	<10e6	Conductive PP	eM-37-BLK	10e4-10e6
Conductive PS	eP-16-BLK	10e4-10e7			
Conductive PC	eM-22-BLK	10e4-10e5			

[RETURN TO TABLE OF CONTENTS](#)

Chip Tray Covers

Tray Size & Function	Thick	Matrix	Chip Tray Description	Order Code	Std Pack Quantity
2" Cover	n/a	n/a	eD2-COVER(1)-eM-01-BLK	eDT0001-eM-01-BLK	2000 / carton
2" Cover	n/a	n/a	eD2-COVER(1)-eM-37	eDT0026-eM-37	2000 / carton
2" Cover	n/a	n/a	eD2-COVER(1)-eM-22-BLK	eDT0027-eM-22-BLK	2000 / carton
2" Cover	n/a	n/a	eD2-COVER(3)-eM-01-BLK	eDT0025-eM-01-BLK	2000 / carton
3" Cover	n/a	n/a	eD3-Cover-X	eDT0070-x	2000 / carton
4" Cover	n/a	n/a	eD4-Cover(3)-X	eDT0080-x	2000 / carton

1 Piece Clip



2 Piece Clip



Spring Box



Material code options (-x in P/N):

Material	Code	SR
Conductive PP	eM-01-BLK	10e4-10e5
ABS	eM-24	N/A
CFPP	eM-46-BLK	10e4-10e10
Anti-static spun PO (Tyvek®)	eM-03-A-WHT	10e6-10e11

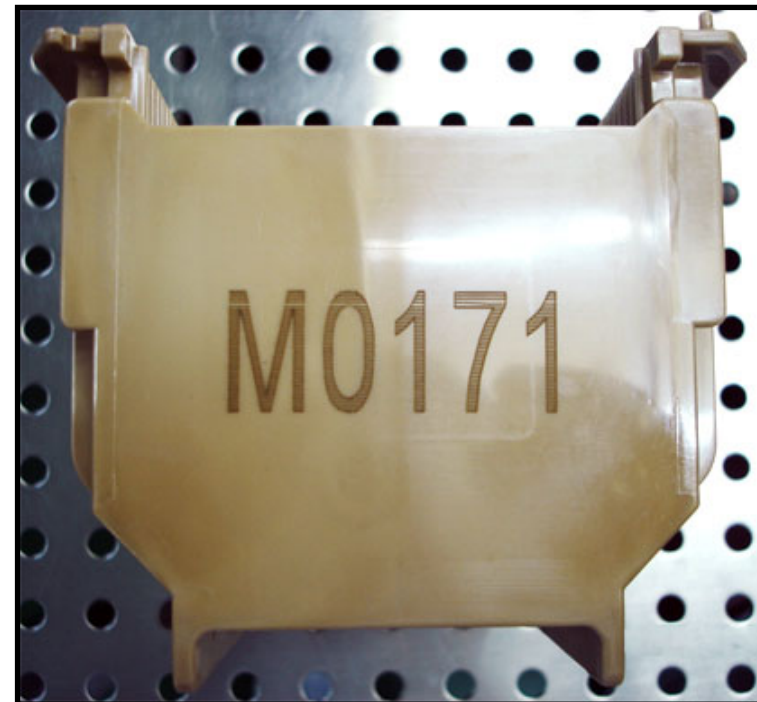
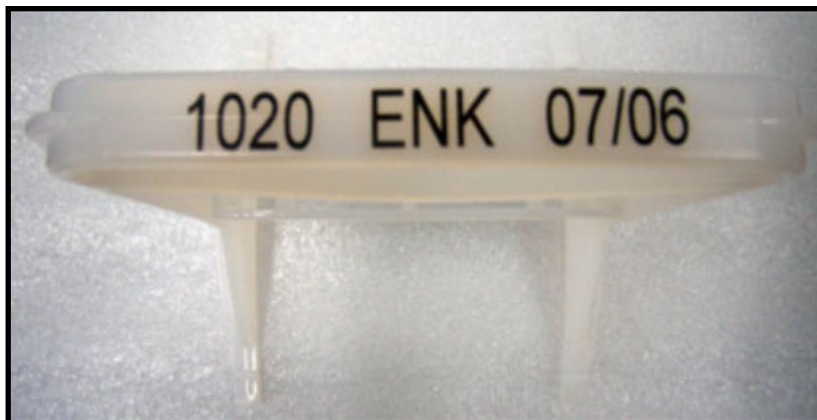
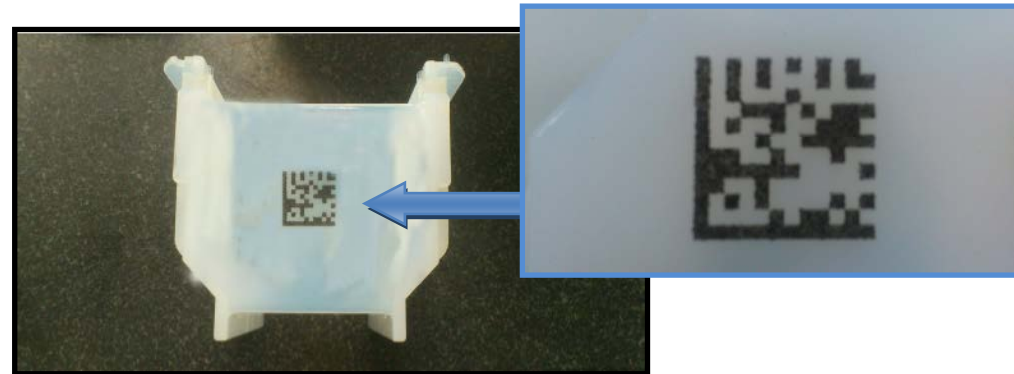
Chip Tray Accessories

Tray Size & Function	STYLE	Capacity	Description	Order Code	Std Pack Quantity
CLIPS:					
2" Clip	1 Piece Clip	2	eD2-CLIP2-R.1-eM-01-BLK	eEC0013-eM-01-BLK	2500 / carton
2" Clip	1 Piece Clip	2	eD2-CLIP2-R.1-eM-24	eEC0026-eM-24	2500 / carton
2" Clip	1 Piece Clip	2	eD2-CLIP2-R.1-eM-46-BLK	eEC0013-eM-46-BLK	2500 / carton
2" Clip	2 Piece Clip	2	eD2-CLIP2-eM-01-BLK	eEC0011-eM-01-BLK	2000 / carton
2" Clip	2 Piece Clip	6	eD2-CLIP6-eM-01-BLK	eEC0010-eM-01-BLK	2000 / carton
2" Clip	2 Piece Clip	11	eD2-CLIP11-eM-01-BLK	eEC0009-eM-01-BLK	2000 / carton
3" Clip	2 Piece Clip	6	eD3-CLIP6-eM-01-BLK	eEC0021-eM-01-BLK	2000 / carton
4" Clip	1 Piece Clip	2	eD4-CLIP2-eM-01-BLK	eEC0024-eM-01-BLK	2500 / carton
4" Clip	2 Piece Clip	6	eD4-CLIP6-eM-01-BLK	eEC0023-eM-01-BLK	2000 / carton
2" Spring Box	Spring Box	6	eD2-EC06-R.1-eM-01-BLK	eEC0033-eM-01-BLK	2000 / carton
2" Spring Box	Spring Box	11	eD2-EC11-eM-01-BLK	eEC0012-eM-01-BLK	2000 / carton
INTERLEAF:					
2" Interleaf	Interleaf	n/a	eIL2-44.5x44.5-0.16-eM-03-A-WHT	eIL0012-eM-03-A-WHT	10,000 /carton
2" Interleaf	Interleaf	n/a	eIL2-45.72x45.72-0.16-eM-03-A-WHT	eIL0020-eM-03-A-WHT	10,000 /carton
4" Interleaf	Interleaf	n/a	eIL4-90.8x90.8-0.16-eM-03-A-WHT	eIL0088-eM-03-A-WHT	10,000 /carton
4" Interleaf	Interleaf	n/a	eIL4-90.8x90.8-0.07-eM-20-BLK	eIL0103-eM-20-BLK	10,000 /carton

[RETURN TO TABLE OF CONTENTS](#)

Custom Laser Markings now available on most ePAK Wafer Products.

- Serialized Alpha Numeric Codes
- Part numbers
- Serial numbers
- QR codes



[RETURN TO TABLE OF CONTENTS](#)

RETICLE BOX

- Front snap lock mechanism for easy box closure
- Integrated hinge set for easy operator opening



Reticle Box

ePAK Description	ePAK Order Code	Std Pack Quantity
ePM-126-3-eM-12	eWB0005-eM-12	20 /carton
ePM-126-2-eM-34	eWB0034-eM-34	20 /carton

Material code info (-x in P/N):

Material	Code	SR
Clear PC	eM-12-TRA	n/a
ESD PP	eM-34-BLK	10e6-10e10



Vacuum formed, cushioning material for protection during shipping (fits inside a carton).

- Designed so that the actual weight drives shipping cost, not the dimensional weight
- Passes industry drop tests

For Wafer Canisters:

Wafer Canister Size	ePAK Overpak Description	ePAK Order Code	Material offered	# of Canisters protected per set	Std Pack Quantity
6" eLX R.1 (small body)	eV15-6-4-x	eVT0734-x	eM-21-CLR	4 pcs	10/Box
6" & 8" eLX style	eV15-6/8-4-x	eVT0334-x	eM-31/eM-21-CLR	4 pcs	10/Box
8" Tall eLX style (eWB0383)	eV18-eWB0383-2-X	eVT1787-x	eM-26-NAT	2 pcs	10/Box
8" Tall eLX style (eWB0383)	eV18-eWB0383-4-X	eVT1785-x	eM-26-NAT	4 pcs	10/Box
eCT-152-26-x	eV12-eCT-152-4-x	eVT0700-x	eM-21-CLR	4 pcs	20/Box
***12" eLX style	eV15-12-1-x	eVT0285-x	eM-21-CLR	1 pcs	2/Box
12" Tall eLX style (eWB0371)	eV18-eCT-LX12/300-71-R.2-X	eVT1843-x	eM-26-NAT	1 pcs	2/Box
450mm	eV18-eCT-450-0.7-x	eVT1553-x	eM-26-NAT	1 pcs	2/Box



For Wafer Jars :

Wafer Jar Size	ePAK Overpak Description	ePAK Order Code	Material offered	# of Jars protected per set	Std Pack Quantity
4"x0.9"	eV12-4x0.9-6-x	eVT0418-x	eM-20-BLK/eM-21-CLR	6 pcs	50/Box
4"x1.2"	eV12-4x1.2-6-x	eVT0419-x	eM-20-BLK/eM-21-CLR	6 pcs	20/box
4"x2.4"	eV12-4x2.4-1-x	eVT0554-x	eM-20-BLK/eM-21-CLR	1 pcs	20/box
4"x2.4"	eV12-4x2.4-4-x	eVT0433-x	eM-20-BLK/eM-21-CLR	4 pcs	20/box
5"x1.5"	eV12-5x1.5-4-x	eVT0807-x	eM-21-CLR	4 pcs	50/box
6"x0.8"	eV12-6x0.8-5-x	eVT1389-x	eM-20-BLK/eM-21-CLR	5 pcs	100/box
6"x1.5"	eV12-6x1.5-2-x	eVT0265-x	eM-21-CLR	2 pcs	50/box
6"x1.5"	eV12-6x1.5-4-x	eVT0266-x	eM-21-CLR	4 pcs	20/box
8"x2"	eV12-8x2-4-x	eVT0300-eM-21-CLR	eM-21-CLR	4 pcs	20/box



Material code options (-x in P/N):

Material	Code	SR
Proprietary conductive PS	eM-20-BLK	10e4-10e11
Clear PS	eM-21-CLR	n/a
PP	eM-26-NAT	n/a
HIPS	eM-31-BLK or -WHT	n/a

[RETURN TO TABLE OF CONTENTS](#)



For Wafer Shipping Boxes::

Designed For Product	ePAK Overpak Description	ePAK Order Code	Material offered	Protected per set	Std Pack Quantity
eMS-2/50-25-x	eV12-2/50-25-x	eVT0487-x	eM-20-BLK/eM-21-CLR	8 pcs	50/Box
100mm (4") ePRO	eV18-4/100-OVERPAK-1-x	eVT0571-x	eM-20/eM-21/eM-26/eM-31	6 pcs	20/Box
100mm (4") ePRO II/III	eV18-4 ePRO II and ePRO III-6-eM-26-NAT	eVT1612-eM-26-NAT	eM-26-NAT	6 pcs	20/Box
125mm (5") ePROII	eV18-ePROII-5/125-OVERPAK-6-eM-26-NAT	eVT1092-eM-26-NAT	eM-26-NAT	6 pcs	20/Box
150mm (6") ePRO	eV18-6/150-OVERPAK-1-x	eVT0575-x	eM-20/eM-21/eM-26/eM-31	4 pcs	20/Box
150mm (6") ePRO II/III	eV18-6" ePROII and ePROIII-2-eM-26-NAT	eVT1653-eM-26-NAT	eM-26-NAT	2 pcs	25/Box
150mm (6") ePRO II/III	eV18-6" ePROII and ePROIII-4-eM-26-NAT	eVT1413-eM-26-NAT	eM-26-NAT	4 pcs	25/Box
150mm (6") ePROII	eV18-ePROII-6/150-OVERPAK-6-eM-26-NAT	eVT1348-eM-26-NAT	eM-26-NAT	6 pcs	20/Box
200mm (8") ePRO I only	eV18-8/200-OVERPAK-1-x	eVT0616-x	ALL	2 pcs	20/Box
200mm (8") ePRO I only	eV18-8/200-OVERPAK-R.1-x	eVT0691-x	eM-20/eM-21/eM-26/eM-31	2 pcs	20/Box
	eV18-8" ePROII and ePROIII-2-X	eVT1535-x	eM-26-NAT	2 pcs	20/Box
200mm ULTRAPAK* & ePROIII	eV15-ULTRAPAKS-x	eVT0703-x	eM-25-CLR/eM-26-NAT	2 pcs	50/Box

For FOSB:

Wafer size	ePAK Overpak Description	ePAK Order Code	Material offered	Number of Ultrapaks® protected per set	Std Pack Quantity
300mm	eV18-12-FOSB-COVER-x	eVT0654-x	eM21-CLR/eM-26-NAT	1 pcs	25/Box
	eV18-12-FOSB-BASE-x	eVT0655-x	eM21-CLR/eM-26-NAT	1 pcs	25/Box
300mm	eV18-12-FOSB-BASE-R.1-x	eVT1588-x	eM21-CLR/eM-26-NAT	1 pcs	25/Box

Material code options (-x in P/N):

Material	Code	SR
Proprietary conductive PS	eM-20-BLK	10e4-10e11
Clear PS	eM-21-CLR	n/a
Clear A/S coated APET	eM-25-CLR	10e7-10e11
PP	eM-26-NAT	n/a
HIPS	eM-31-BLK or -WHT	n/a

*Ultrapak® is a registered trademark of EMPAK, Inc.



[RETURN TO TABLE OF CONTENTS](#)



For Flex Frame Shipping Box::

Designed For Product	ePAK Overpak Description	ePAK Order Code	Material offered	eFF Shippers protected per set	Std Pack Quantity
150mm (6") Flex Frame Shipper	eV18-eFS6-150-25-R.1-OVERPAK-1-X	eVT1295-x	eM-20-BLK/eM-21-CLR eM-26-NAT/eM-31	1 pcs	20/Box
150mm (6") Flex Frame Shipper	eV18-eFS6-150-25-R.1-OVERPAK-R.2-X	eVT1662	eM-26-NAT	1Pcs	20/Box
200mm (8") Flex Frame Shipper	eV18-eFS8-200-25-R.1-OVERPAK-X	eVT1664	eM-26-NAT	1Pcs	20/Box
200mm (8") Flex Frame Canister	eV15-10.8-1-x	eVT1697	eM-26-NAT	1Pcs	20/Box
300mm (12") Flex Frame Shipper	eV18-eFS12-300-13-OVERPAK-X	eVT1661	eM-26-NAT	1Pcs	20/Box

Material code options (-x in P/N):

Material	Code	SR
Proprietary conductive PS	eM-20-BLK	10e4-10e11
Clear PS	eM-21-CLR	n/a
Clear A/S coated APET	eM-25-CLR	10e7-10e11
PP	eM-26-NAT	n/a
HIPS	eM-31-BLK or -WHT	n/a

[RETURN TO TABLE OF CONTENTS](#)



Plastic Clean Room Bags - Clear LDPE bags- open on one side

Bag Description	Order Code	For ePAK Products:	Std Pack Quantity
eM-35 (LDPE) Material:			
eBAG-140x280x0.06-eM-35	eOP0095-1-eM-35		500pcs / carton
eBAG-200x360x0.10-eM-35	eOP0095-2-eM-35		500pcs / carton
eBAG-200x360x0.15-eM-35	eOP0095-3-eM-35		500pcs / carton
eBAG-205x330x0.06-eM-35	eOP0095-4-eM-35		500pcs / carton
eBAG-230x270x0.06-eM-35	eOP0095-5-eM-35	eJR-170-38-X, eCT-152-26-x, eCT6-150-0.7-x, eJR6-150-20-Base-X	500pcs / carton
eBAG-230x360x0.06-eM-35	eOP0095-6-eM-35		500pcs / carton
eBAG-230x420x0.06-eM-35	eOP0095-7-eM-35	eCT5-125-X	500pcs / carton
eBAG-255x155x0.06-eM-35	eOP0095-8-eM-35		500pcs / carton
eBAG-280x310x0.06-eM-35	eOP0095-9-eM-35	eCT8-200-0.7-X, eCT6-150-X, eJR-167-76-X, eJR-167-76-X	500pcs / carton
eBAG-280x580x0.08-eM-35	eOP0095-10-eM-35	eMS-3/76-25-x	500pcs / carton
eBAG-280x650x0.08-eM-35	eOP0095-11-eM-35	eMS-4/100-10-x	500pcs / carton
eBAG-280x650x0.06-eM-35	eOP0095-12-eM-35		500pcs / carton
eBAG-300x360x0.06-eM-35	eOP0095-13-eM-35	eJR-235-51-X, eJR8-200-23-Base-X	500pcs / carton
eBAG-310x780x0.08-eM-35	eOP0095-14-eM-35	eMS-4/100-25-x	500pcs / carton
eBAG-330x360x0.06-eM-35	eOP0095-15-eM-35	eCT-LX8/200-4-44-X, eCT-LX6/150-4-44-X	500pcs / carton
eBAG-360x550x0.10-eM-35	eOP0095-16-eM-35	For 8" clam shell	500pcs / carton
eBAG-360x650x0.06-eM-35	eOP0095-17-eM-35		500pcs / carton
eBAG-368x863x0.08-eM-35	eOP0095-18-eM-35		500pcs / carton
eBAG-370x400x0.06-eM-35	eOP0095-19-eM-35	eMS-2/50-25-x, eMS-3/76-25-x, ePB-2/50-25-x, ePB-3/76-25-x	500pcs / carton
eBAG-406x508x0.06-eM-35	eOP0095-20-eM-35		500pcs / carton
eBAG-406x508x0.08-eM-35	eOP0095-21-eM-35		500pcs / carton
eBAG-410x460x0.06-eM-35	eOP0095-22-eM-35		500pcs / carton
eBAG-410x510x0.06-eM-35	eOP0095-23-eM-35	eCT2-50-x, eCT-LX12/300-4-44-x.	500pcs / carton
eBAG-445x876x0.06-eM-35	eOP0095-24-eM-35		500pcs / carton
eBAG-450x510x0.06-eM-35	eOP0095-25-eM-35		500pcs / carton
eBAG-495x533x0.06-eM-35	eOP0095-26-eM-35		500pcs / carton
eBAG-495x615x0.06-eM-35	eOP0095-27-eM-35	For 8" ePRO inside bag	500pcs / carton
eBAG-635x502x0.08-eM-35	eOP0095-28-eM-35		500pcs / carton

*Please confirm Description and Order Code information with your ePAK Representatives

Material code info:

Material	Code	SR
Plastic Clean Room Bag (LDPE)	eM-35	n/a

Bag Part Number Description:



[RETURN TO TABLE OF CONTENTS](#)

Plastic Clean Room Bags - Clear HDPE bags- open on one side

Bag Description	Order Code	For ePAK Products:	Std Pack Quantity
eM-52 (HDPE) Material:			
eBAG-230x500x0.08-eM-52	eOP0129-1-eM-52	For 2" cassette	500pcs / carton
eBAG-280x580x0.08-eM-52	eOP0129-2-eM-52	For 2.5"/3" cassette	500pcs / carton
eBAG-305x356x0.08-eM-52	eOP0129-3-eM-52	ePRO-4/100-25-x	500pcs / carton
eBAG-320x406x0.08-eM-52	eOP0129-4-eM-52	ePRO-5/125-25-x	500pcs / carton
eBAG-380x430x0.08-eM-52	eOP0129-5-eM-52	ePRO-6/150-25-x	500pcs / carton
eBAG-485x585x0.08-eM-52	eOP0129-6-eM-52	ePRO-8/200-25-x	500pcs / carton
eBAG-381x483x0.08-eM-52	eOP0129-7-eM-52	6" Coinstyle Single Shippers	500pcs / carton
eBAG-600x620x0.08-eM-52	eOP0129-8-eM-52	450mm Single Shipper	100pcs / carton

**Please confirm Description and Order Code information with your ePAK Representatives*

Material code info:

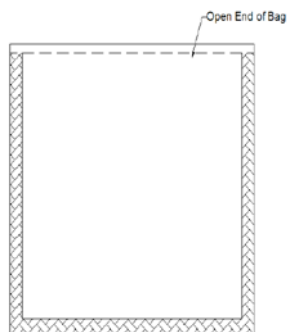
Material	Code	SR
Plastic Clean Room Bag (HDPE)	eM-52	n/a

Bag Part Number Description:

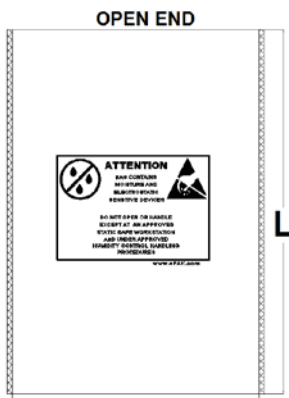


[RETURN TO TABLE OF CONTENTS](#)

ESD/Moisture Barrier Bag (Metalized PET+PET+CPE material)-



eOP0116-eM-41



eOP0078-eM-41

eM-41 Material:			
Bag Description	Order Code	For ePAK Products:	Std Pack Quantity
eBAG-141x138x0.08-eM-41	eOP0116-eM-41		500pcs / carton
eBAG-171x168x0.08-eM-41	eOP0116-2-eM-41		500pcs / carton
eBAG-159x159x0.08-eM-41	eOP0106-eM-41		500pcs / carton
eBAG-160x200x0.08-eM-41	eOP0078-1-eM-41	eJR4-100-20-x, eJR4-100-30-x	500pcs / carton
eBAG-160X220X0.08-eM-41	eOP0078-2-eM-41	eWB0040 and eWB0044	500pcs / carton
eBAG-166x192x0.08-eM-41	eOP0078-3-eM-41	eJR4-100-23-x, eJR4-100-32-x	500pcs / carton
eBAG-180x230x0.08-eM-41	eOP0078-4-eM-41	eJR4-100-49-x	500pcs / carton
eBAG-195x230x0.08-eM-41	eOP0078-5-eM-41	eJR4-100-49-X, eJR4-100-60.5-X	500pcs / carton
eBAG-200x260x0.08-eM-41	eOP0078-6-eM-41		500pcs / carton
eBAG-200X300X0.08-eM-41	eOP0078-7-eM-41		500pcs / carton
eBAG-230x280x0.08-eM-41	eOP0078-8-eM-41	eJR6-170-38-x	500pcs / carton
eBAG-260X310X0.08-eM-41	eOP0078-9-eM-41	eWB0086	500pcs / carton
eBAG-280x330x0.08-eM-41	eOP0078-10-eM-41	eCT-152-26-x	500pcs / carton
eBAG-280X580X0.08-eM-41	eOP0078-11-eM-41	eWB0029	500pcs / carton
eBAG-280X650X0.08-eM-41	eOP0078-12-eM-41	eWB0258	500pcs / carton
eBAG-305x356x0.08-eM-41	eOP0078-13-eM-41	ePRO-4/100-25-x	500pcs / carton
eBAG-305x406x0.08-eM-41	eOP0078-14-eM-41		500pcs / carton
eBAG-310-360x0.08-eM-41	eOP0078-15-eM-41	eCT-202-30-x, eJR-235-51-x	500pcs / carton
eBAG-310X780X0.08-eM-41	eOP0078-16-eM-41	For eWB0259	500pcs / carton
eBAG-320x360x0.08-eM-41	eOP0078-17-eM-41		500pcs / carton
eBAG-320x406x0.08-eM-41	eOP0078-18-eM-41	ePRO-5/125-25-x	500pcs / carton
eBAG-330x380x0.08-eM-41	eOP0078-19-eM-41	eCT-LX6/150-4-44-x, eCT-LX8/200-4-44-x, eWB0323	500pcs / carton
eBAG-365X550X0.10-eM-41	eOP0078-20-eM-41	8" clamshell	500pcs / carton
eBAG-380x430x0.08-eM-41	eOP0078-21-eM-41		500pcs / carton
eBAG-390x460x0.08-eM-41	eOP0078-22-eM-41	ePRO-6/150-25-x	500pcs / carton
eBAG-420x500x0.08-eM-41	eOP0078-23-eM-41	eCT-LX12/300-4-44-x,	500pcs / carton
eBAG-460x520x0.08-eM-41	eOP0078-24-eM-41		500pcs / carton
eBAG-500X600X0.08-eM-41	eOP0078-26-eM-41		500pcs / carton
eBAG-508x635x0.08-eM-41	eOP0078-27-eM-41		500pcs / carton
eBAG-546x610x0.08-eM-41	eOP0078-28-eM-41		500pcs / carton
eBAG-813x813x0.08-eM-41	eOP0078-29-eM-41		500pcs / carton
eBAG-500X600X0.08-eM-41	eOP0078-26-eM-41		500pcs / carton
eBAG-500X600X0.08-eM-41	eOP0078-26-eM-41		500pcs / carton

*Please confirm Description and Order Code information with your ePAK Representatives

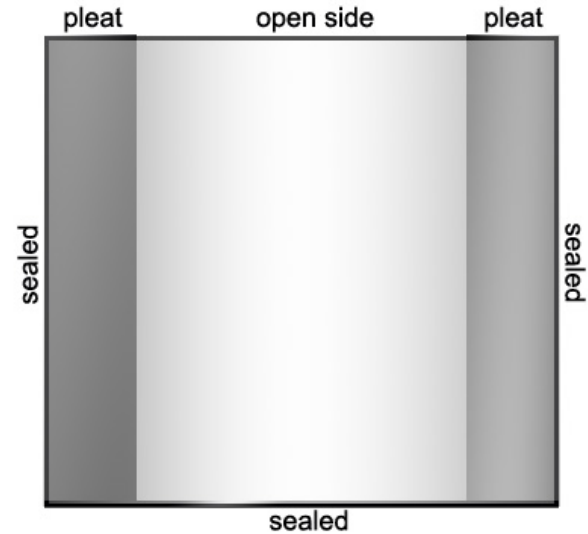
Material code info:

Material	Code	SR
ESD/Moisture Barrier Bag (Metalized PET+PET+CPE)	eM-41	10e6 -10e11

[RETURN TO TABLE](#)
[OF CONTENTS](#)

PLEATED PACKING BAGS

-FOR VACUUM PACKING APPLICATIONS-



Pleated Bags: Pleated on 2 sides

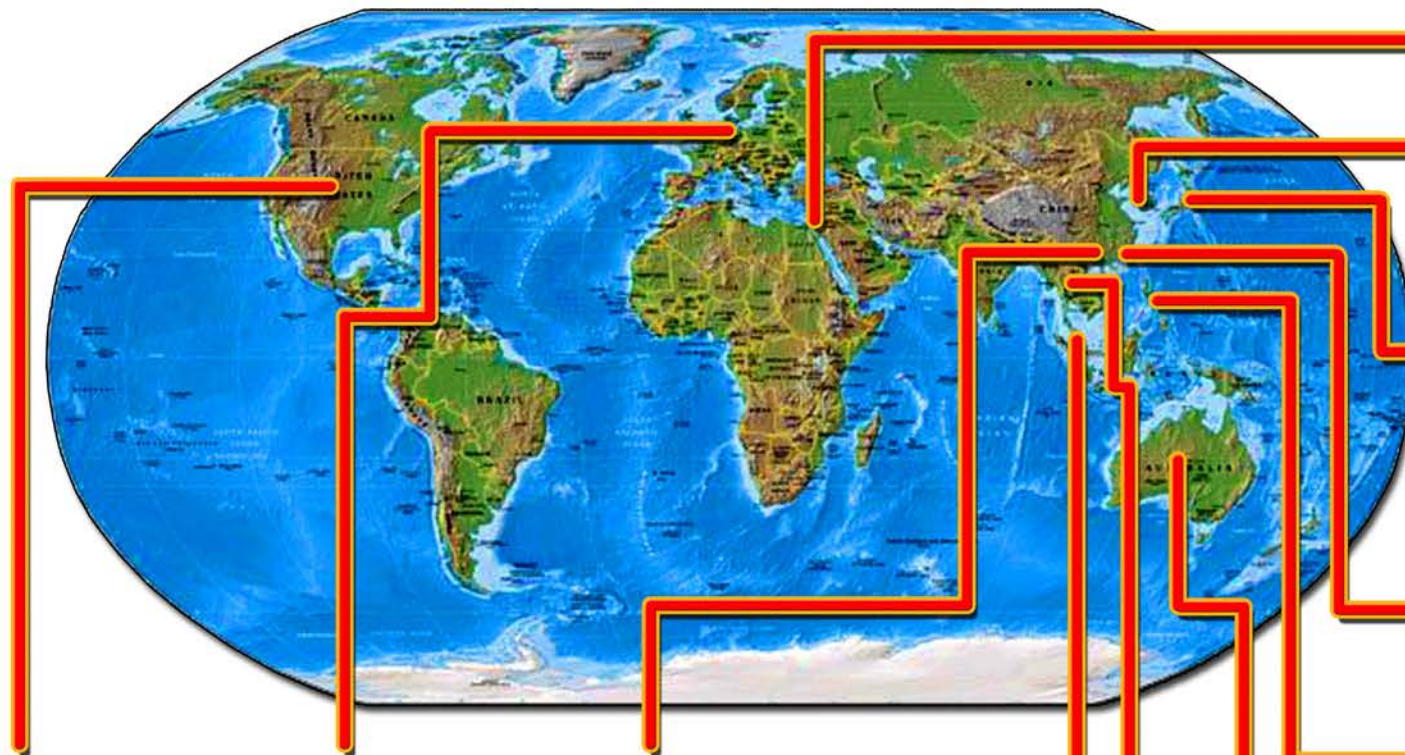
Bag Description	Std Pack Quantity	Order Code	For ePAK Products:
eBAG-155x255x0.06-eM-35	500pcs/ carton	eOP0113-eM-35	
eBAG-152.4x228.6x0.06-eM-35	500pcs/ carton	eOP0113-eM-35	
eBAG-960x830x0.08-eM-52	500pcs/ carton	eOP0113-eM-52	For FOSB

**Please confirm Description and Order Code information with your ePAK Representatives*

Material code options (-x in P/N):

Material	Code	SR
Plastic Clean Room Bag (LDPE)	eM-35	n/a
Plastic Clean Room Bag (HDPE)	eM-52	n/a

[RETURN TO TABLE OF CONTENTS](#)



ePAK International, Inc.
Austin, Texas, U.S.A.
Phone: +1-512-231-8083
Fax: +1-512-231-8183

SPS-Europe
Europe
Phone: +31 341 360590
Fax: +31 341 360589

ePAK Solutions (SZ) Co.,Ltd.
ePAK Technologies (SZ) Co.,Ltd.
Shenzhen, China
Phone: +86-755-3382-7888
Fax: +86-755-2862-1452

M.Y.G. Tech
Israel
Phone: +972-8 9760620
Fax: +972-8-9760621

ePAK Korea
Seoul, Korea
Phone: +822-401-2627
Fax: +822-401-2618

Kangawa Shoji
Japan Head Office:
Phone: (81) 936610360
Fax: (81) 936618552
Hong Kong Office:
Phone: +852-2380-0196
Fax: +852-2380-1050

ePAK Taiwan
Taipei, Taiwan
Phone: +886-2-291-49591
Fax: +886-2-291-49597

ePAK Philippines
Manila, Philippines
Phone: +63-908-815-8322
Land: +63-49-302-5812

NSI(Thailand) Co., Ltd.
Thailand
Phone: 02-663-3070-2
Fax: 02-663-3073

MMRC Pty Ltd.
Australia
Phone: +61-3-9885-1752
Fax: +61-3-9885-2603

ePAK Resources (S) Pte Ltd.
Singapore
Phone: +65-6846-9908
Fax: +65-6547-4269

Litronics (S) Pte Ltd.
Singapore
Phone: +65-6842-7889
Fax: +65-6842-7229

Koike (M) Sdn Bhd
Malaysia
Phone: +603-31763923
Fax: +603-31763923

Jas Pak (S) Pte., Ltd.
Thailand
Phone: +65 6481 0045
Fax: +65 6483 0045



[RETURN TO TABLE OF CONTENTS](#)