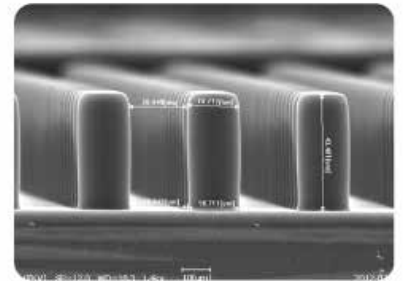
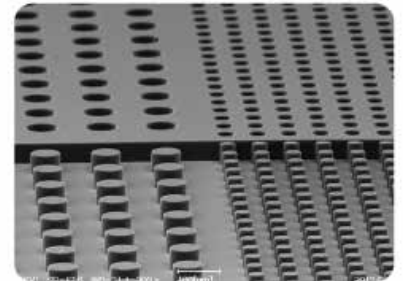


■ Semi Automatic Mask Aligner 8 inch

The MDA-60MS is designed for research organizations who want to work with a state of the art technology mask aligner. This highly accurate system allows researchers to easily develop their processes on either small substrate pieces or wafers up to 8".



Standard Features

Semi auto system	- Auto leveling of mask and sample - Manual loading, unloading & alignment
PC & PLC control	
Sample size	Up to 8" diameter
Mask size	Up to 9" x 9"
Wafer stage	X,Y,Z and theta 4 axis motion (motorized Z & theta axis)
1000W mercury short arc lamp & power supply	
Dual CCD zoom microscope and 19" LCD monitor	
Anti-vibration table and oil-less vacuum pump included	
Dimension	1400 (W) x 1100 (D) x 1600 (H) mm
Weight	650 kg
Warranty	1 year



Tel.: (31) 341 360 590
info@sps-europe.com
info@sps-asia.com

03/2016-REV1

Semi Automatic Mask Aligner 8 inch

Light source module specifications

1000W mercury short lamp & power supply	
Wavelength	NUV 350nm ~ 450nm
365nm Max. intensity	> 25 mW/cm ²
Max. beam size	9.25" x 9.25"
Beam uniformity	≤ 4%

Top side microscope specifications

Manual moving stage	Dual X, Y, Z axis
Moving distance	
objective separation	100 ~ 200mm
Y-Axis	± 10mm
Magnification	90x ~500x 2x attachment
	180x~1000x W.D. 34mm
19" LCD monitor	

Resolution specifications

Vacuum contact	1μm
Hard contact	2μm
Soft contact	3μm
20μm proximity	5μm

Double-side alignment module specifications (CCD CAMERAS TYPE)

Lens magnification	7.3X
Lens resolution	2.76μm (@WD25mm)
Field of view	0.655 x 0.49mm
Dual X,Y,Z motorizing mode	
Image grab & saving	
Dual CCD camera module	
Alignment accuracy	BSA < ±2.0μm

Stage and controller module specifications

Exposure timer 0.1 sec to 999.9 hour	
Stage moving distance	
X, Y axis	± 5mm
Z axis	15mm
Theta axis	± 4°
Stage resolution	
X, Y stage resolution	0.1μm
Theta	5 x 10 ⁻⁵ °
Z Axis	0.1 ~ 100μm
Z and theta axis motorized motion	
Z-Axis alignment gap	0 ~ 100μm
Alignment accuracy	1μm

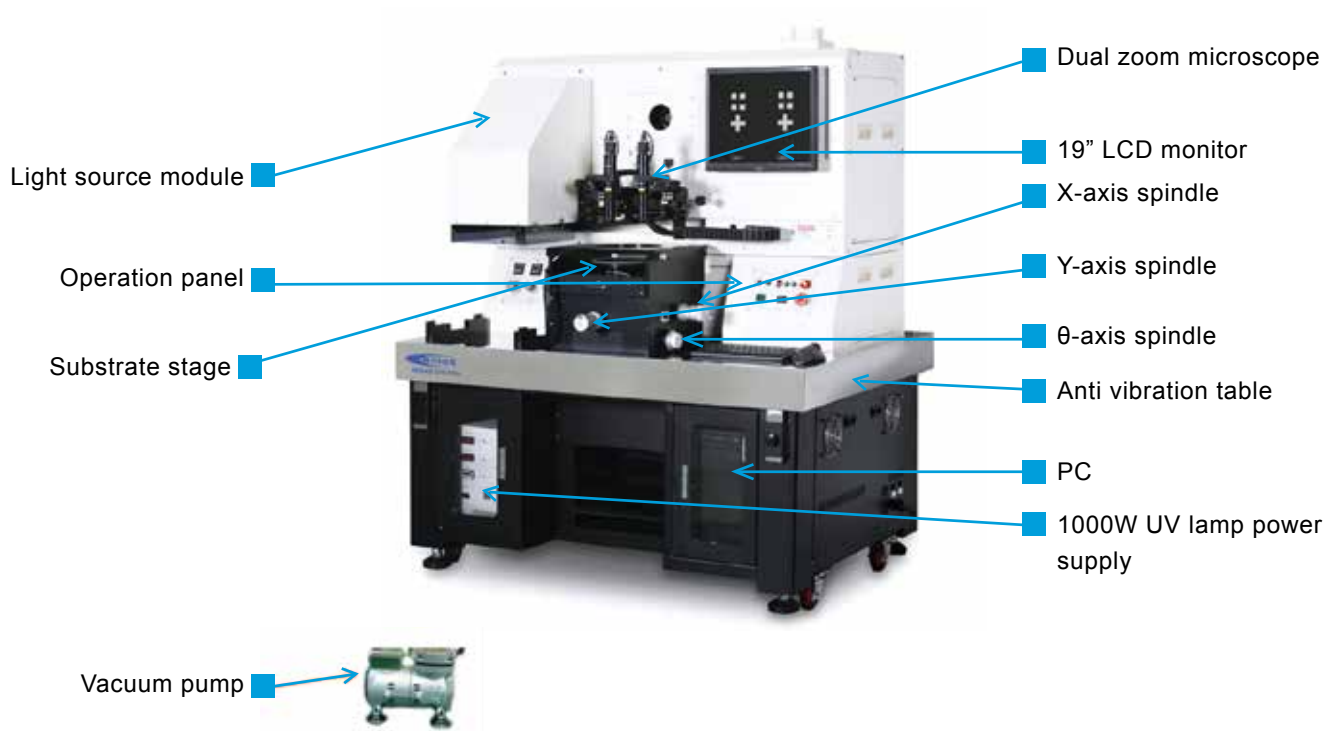
Utility requirement specifications

Electric power	230VAC / 15A / single phase
Nitrogen	More than 4kg/cm ² (50 psi) flow rate 5 Liter/min. Outside diameter 6 mm PU Tube
Clean dry air	More than 6kg/cm ² (80 psi), flow rate 10 Liter/min. Outside diameter 6 mm tube
Vacuum	< -200 mbar
Exhaust	Not required
Nitrogen consumption	13~17 Liter/min for process (stage 1 Liter/min lamp house 12~16 Liter/min)



Tel.: (31) 341 360 590
info@sps-europe.com
info@sps-asia.com

■ Semi Automatic Mask Aligner 8 inch



Tel.: (31) 341 360 590
info@sps-europe.com
info@sps-asia.com